

LEA Name : South Middleton SD
Address : Administration Office, Suite 100
Boiling Springs , PA 17007

County : Cumberland
AUN Number : 115218303
LEA Type : SD

Annual Financial Report Accuracy Certification Statement

For Fiscal Year Ending
6/30/2020

Pennsylvania Department of Education
&
Office of Comptroller Operations

PDE-2056: Intermediate Unit
PDE-2057: School District, AVTS/CTC, Charter School,
and Special Program Jointure

CERTIFICATION: By signing this page I agree that the electronic data submitted is a complete and accurate statement of the financial operations and status of the local education agency for the fiscal year. It has been prepared in accordance with generally accepted accounting principles and established Commonwealth of PA reporting guidelines.

Chief School Administrator Signature

Date

Board Secretary Signature

Date

Nicole Weber

Contact Person

(717)218-5820 Ext :

Contact Person Telephone Number

nlw@smsd.us

Contact Person E-mail Address

Contact Person Fax Number

Audit Certification
Annual Financial Report:
For Fiscal Year Ending **6/30/2020**
(Pursuant to PA School Code Section 218(b))

LEA Name : South Middleton SD
AUN Number : 115218303
County : Cumberland

Audit Certification Due: 12/31/2020

This certification is applicable to the Annual Financial Report data submitted through the Consolidated Financial Reporting System (CFRS).

CERTIFICATION: By signing this page I agree that the financial statements of the school have been properly audited as noted above pursuant to Article XXIV, and in the auditor's professional opinion, the Annual Financial Report (PDE-2057) submitted through CFRS is materially consistent with the audited financial statements.

Chief School Administrator

Board Secretary

Signature

Date

Signature

Date

Nicole Weber

Contact Person

nlw@smsd.us

Contact Person E-mail Address

(717)218-5820 Ext :

Contact Person Telephone Number

Contact Person Fax Number

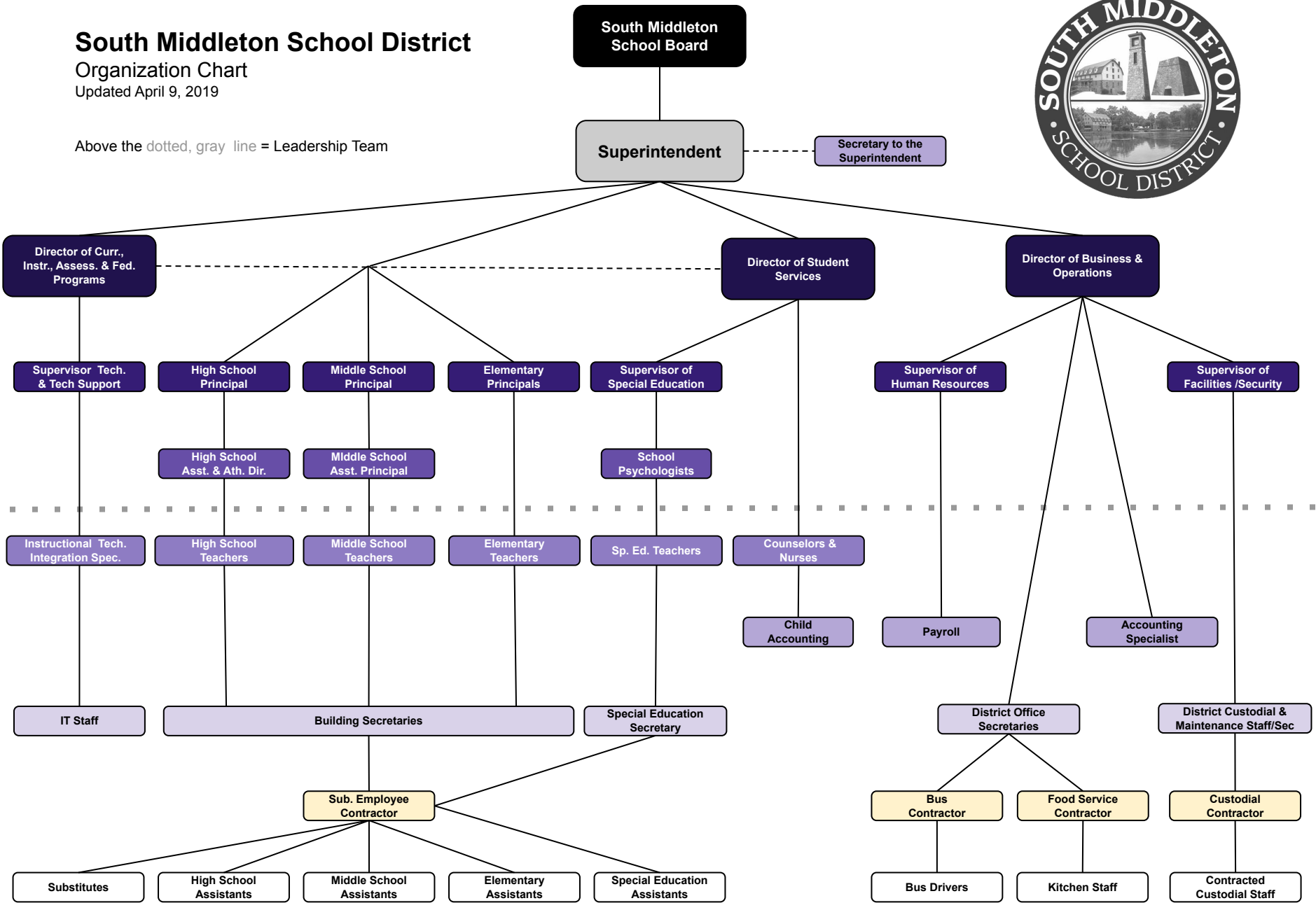
South Middleton School District

Organization Chart

Updated April 9, 2019



Above the dotted, gray line = Leadership Team



Book	Policy Manual
Section	600 Finances
Title	GASB Statement 34
Code	622
Status	Active
Adopted	July 14, 2003
Last Revised	March 20, 2006

Purpose

The Board recognizes the need to implement the required accounting and financial reporting standards stipulated by the Pennsylvania Department of Education.[\[1\]](#)

Authority

The primary objectives of implementing the GASB Statement 34 are to assure compliance with state requirements, and properly account for both the financial and economic resources of the district.

Delegation of Responsibility

The responsibility to coordinate the compilation and preparation of all information necessary to implement this policy is delegated to the Business Administrator.

The designated individual shall be responsible for implementing of the necessary procedures to establish and maintain a fixed asset inventory, including depreciation schedules. Depreciation shall be computed on a straight-line basis over the useful lives of the assets, using an averaging convention. Normal maintenance and repairs shall be charged to expense as incurred; major renewals and betterments that materially extend the life or increase the value of the asset shall be capitalized. A schedule of accumulated depreciation shall be consistent from year to year. The basis for depreciation, including groups of assets and useful lives, shall be in writing and submitted for review to the Board and independent auditors.

The Business Administrator shall prepare the required Management Discussion and Analysis (MD&A). The MD&A shall be in the form required by GASB Statement 34 and shall be submitted to the Board for approval, prior to publication.

Prior to submission of the MD&A for Board approval, the district's independent auditors shall review the MD&A, in accordance with SAS No. 52, "Required Supplementary Information."

Guidelines

In order to associate debt with acquired assets and to avoid net asset deficits, any asset that has been acquired with debt proceeds shall be capitalized, regardless of the cost of the asset. The asset life of these assets shall be considered relative to the time of the respective debt amortizations.

For all other assets not acquired by debt proceeds, the dollar value of any single item for inclusion in the fixed assets accounts shall be not less than \$5,000.

Assets that fall below the capitalization threshold for GASB 34 reporting purposes may still be significant for insurance, warranty service, and obsolescence/ replacement policy tracking purposes. The district may record and maintain these non-GASB 34 asset inventories in subsidiary ledgers.

Legal

1. 24 P.S. 613

Val Number

Description

Justification

30685

Revenue Detail: Current Tax Revenue amount cannot exceed 50% variance from prior year amount. Correct the data or enter a justification.

In December 2019, the district received a large real estate transfer due to a parcel with a large assessment value changing ownership.

6153, Current AFR Rev Detail: \$706,028.45
6153, Prior AFR Rev Detail: \$393,992.52

Amounts Expressed in Whole Dollars

	<u>General Fund</u> <u>(10)</u>	<u>Student Sponsored</u> <u>Activity Fund</u> <u>(21)</u>	<u>Public Purpose Trust</u> <u>(27)</u>	<u>Other Compt Approved</u> <u>(28)</u>	<u>Athletic / Activity</u> <u>(29)</u>
Assets And Deferred Outflows Of Resources					
Assets					
0100 Cash and Cash Equivalents	6,348,179				
0110 Investments	3,206,506				
0120 Taxes Receivable	1,288,551				
0130 Due From Other Funds	90,429				
0141 Due From Other Governments					
0142 State Revenue Receivable	1,129,817				
0143 Federal Revenue Receivable	302,595				
0145 Other Intergovernmental Revenue Receivable					
0146 Due from Primary Government					
0147 Due from Component Unit					
0150 Other Receivables	9,866				
0170 Inventories	20,592				
0180 Prepaid Expenses (Expenditures)	10,000				
0190 Other Current Assets					
Total Assets	\$12,406,535				
0910 Deferred Outflows of Resources					
Total Assets And Deferred Outflows Of Resources	\$12,406,535				

Amounts Expressed in Whole Dollars	<u>Capital Reserve (690.</u> <u>1850)</u> <u>(31)</u>	<u>Capital Reserve (1431)</u> <u>(32)</u>	<u>Other Capital Projects</u> <u>Fund</u> <u>(39)</u>	<u>Debt Service</u> <u>(40)</u>	<u>Permanent</u> <u>(90)</u>
Assets And Deferred Outflows Of Resources					
Assets					
0100 Cash and Cash Equivalents		11,080	920,264		
0110 Investments			351,643		
0120 Taxes Receivable					
0130 Due From Other Funds		50,872			
0141 Due From Other Governments					
0142 State Revenue Receivable					
0143 Federal Revenue Receivable					
0145 Other Intergovernmental Revenue Receivable					
0146 Due from Primary Government					
0147 Due from Component Unit					
0150 Other Receivables					
0170 Inventories					
0180 Prepaid Expenses (Expenditures)					
0190 Other Current Assets					
Total Assets		\$61,952	\$1,271,907		
0910 Deferred Outflows of Resources					
Total Assets And Deferred Outflows Of Resources		\$61,952	\$1,271,907		

Amounts Expressed in Whole Dollars

Total Governmental Funds

Assets And Deferred Outflows Of Resources

Assets	
0100 Cash and Cash Equivalents	7,279,523
0110 Investments	3,558,149
0120 Taxes Receivable	1,288,551
0130 Due From Other Funds	141,301
0141 Due From Other Governments	
0142 State Revenue Receivable	1,129,817
0143 Federal Revenue Receivable	302,595
0145 Other Intergovernmental Revenue Receivable	
0146 Due from Primary Government	
0147 Due from Component Unit	
0150 Other Receivables	9,866
0170 Inventories	20,592
0180 Prepaid Expenses (Expenditures)	10,000
0190 Other Current Assets	
Total Assets	\$13,740,394
0910 Deferred Outflows of Resources	
Total Assets And Deferred Outflows Of Resources	\$13,740,394

Amounts Expressed in Whole Dollars

<u>General Fund</u> <u>(10)</u>	<u>Student Sponsored</u> <u>Activity Fund</u> <u>(21)</u>	<u>Public Purpose Trust</u> <u>(27)</u>	<u>Other Compt Approved</u> <u>(28)</u>	<u>Athletic / Activity</u> <u>(29)</u>
------------------------------------	---	--	--	---

Liabilities And Deferred Inflows Of Resources And Fund Balances

Liabilities

0400 Due to Other Funds	
0411 Due to Other Governments	92,872
0412 Due to Primary Government	
0413 Due to Component Unit	
0420 Accounts Payable	63,866
0430 Contracts Payable	
0440 Current Portion of Long-Term Debt	
0450 Short-Term Payables	
0461 Accrued Salaries and Benefits	3,299,079
0462 Payroll Deductions and Withholding	206,681
0480 Unearned Revenues	
0490 Other Current Liabilities	

Total Liabilities	\$3,662,498
--------------------------	--------------------

0950 Deferred Inflows of Resources	196,194
------------------------------------	---------

Fund Balances

0810 Nonspendable Fund Balance	
0820 Restricted Fund Balance	
0830 Committed Fund Balance	5,750,000
0840 Assigned Fund Balance	
0850 Unassigned Fund Balance	2,797,843

Total Fund Balances	\$8,547,843
----------------------------	--------------------

Total Liabilities, Deferred Inflows Of Resources And Fund Balances	\$12,406,535
---	---------------------

Amounts Expressed in Whole Dollars

<u>Capital Reserve (690.</u>	<u>Capital Reserve (1431)</u>	<u>Other Capital Projects</u>	<u>Debt Service</u>	<u>Permanent</u>
<u>1850)</u>	<u>(32)</u>	<u>Fund</u>	<u>(40)</u>	<u>(90)</u>
<u>(31)</u>		<u>(39)</u>		

Liabilities And Deferred Inflows Of Resources And Fund Balances

Liabilities

0400 Due to Other Funds				
0411 Due to Other Governments				
0412 Due to Primary Government				
0413 Due to Component Unit				
0420 Accounts Payable			72,002	
0430 Contracts Payable			13,478	
0440 Current Portion of Long-Term Debt				
0450 Short-Term Payables				
0461 Accrued Salaries and Benefits				
0462 Payroll Deductions and Withholding				
0480 Unearned Revenues				
0490 Other Current Liabilities				

Total Liabilities			\$85,480
--------------------------	--	--	-----------------

0950 Deferred Inflows of Resources

Fund Balances

0810 Nonspendable Fund Balance				
0820 Restricted Fund Balance		61,952	1,186,427	
0830 Committed Fund Balance				
0840 Assigned Fund Balance				
0850 Unassigned Fund Balance				

Total Fund Balances	\$61,952	\$1,186,427
----------------------------	-----------------	--------------------

Total Liabilities, Deferred Inflows Of Resources And Fund Balances	\$61,952	\$1,271,907
---	-----------------	--------------------

Amounts Expressed in Whole Dollars

Total Governmental Funds

Liabilities And Deferred Inflows Of Resources And Fund Balances

Liabilities

0400 Due to Other Funds	
0411 Due to Other Governments	92,872
0412 Due to Primary Government	
0413 Due to Component Unit	
0420 Accounts Payable	135,868
0430 Contracts Payable	13,478
0440 Current Portion of Long-Term Debt	
0450 Short-Term Payables	
0461 Accrued Salaries and Benefits	3,299,079
0462 Payroll Deductions and Withholding	206,681
0480 Unearned Revenues	
0490 Other Current Liabilities	

Total Liabilities \$3,747,978

0950 Deferred Inflows of Resources	196,194
------------------------------------	---------

Fund Balances

0810 Nonspendable Fund Balance	
0820 Restricted Fund Balance	1,248,379
0830 Committed Fund Balance	5,750,000
0840 Assigned Fund Balance	
0850 Unassigned Fund Balance	2,797,843

Total Fund Balances \$9,796,222

Total Liabilities, Deferred Inflows Of Resources And Fund Balances \$13,740,394

Amounts Expressed in Whole Dollars	<u>General Fund</u> <u>(10)</u>	<u>Student Sponsored</u> <u>Activity Fund</u> <u>(21)</u>	<u>Public Purpose Trust</u> <u>(27)</u>	<u>Other Compt Approved</u> <u>(28)</u>	<u>Athletic / Activity</u> <u>(29)</u>
Revenues					
6000 Revenue from Local Sources	27,379,367				
7000 Revenue from State Sources	10,870,461				
8000 Revenue from Federal Sources	275,327				
Total Revenues	\$38,525,155				
Expenditures					
1000 Instruction	20,068,467				
2000 Support Services	11,801,285				
3000 Operation of Non-Instructional Services	841,262				
4000 Facilities Acquisition, Construction and Improvement Services					
5110 Debt Service	3,324,959				
5130 Refund of Prior Year Revenues / Receipts	53				
Total Expenditures	\$36,036,026				
Excess (Deficiency) Of Revenues Over Expenditures	\$2,489,129				
Other Financing Sources (Uses)					
9110 Face Value of Bonds Issued					
9120 Proceeds from Refunding of Bonds					
9130 Bond Premiums					
9200 Proceeds from Extended-Term Financing					
9300 Interfund Transfers - IN					
9400 Sale of or Compensation for Loss of Fixed Assets					
9710 Transfers from Component Units					
9720 Transfers from Primary Governments					
9910 Other Financing Sources Not Listed in the 9000 Series					
9990 Insurance Recoveries					
5120 Debt Service – Refunded Bonds					
5150 Bond Discounts					
5200 Interfund Transfers – Out	867,389				
5300 Transfers Out to Component Units/Primary Governments					
Total Other Financing Sources (Uses)	(\$867,389)				

Amounts Expressed in Whole Dollars	<u>Capital Reserve (690.1850)</u> <u>(31)</u>	<u>Capital Reserve (1431)</u> <u>(32)</u>	<u>Other Capital Projects</u> <u>Fund</u> <u>(39)</u>	<u>Debt Service</u> <u>(40)</u>	<u>Permanent</u> <u>(90)</u>
Revenues					
6000 Revenue from Local Sources		119	10,103		
7000 Revenue from State Sources					
8000 Revenue from Federal Sources					
Total Revenues		\$119	\$10,103		
Expenditures					
1000 Instruction					
2000 Support Services			162,350		
3000 Operation of Non-Instructional Services					
4000 Facilities Acquisition, Construction and Improvement Services		12,676	605,432		
5110 Debt Service			72,681		
5130 Refund of Prior Year Revenues / Receipts					
Total Expenditures		\$12,676	\$840,463		
Excess (Deficiency) Of Revenues Over Expenditures		(\$12,557)	(\$830,360)		
Other Financing Sources (Uses)					
9110 Face Value of Bonds Issued					
9120 Proceeds from Refunding of Bonds			9,705,000		
9130 Bond Premiums			291,371		
9200 Proceeds from Extended-Term Financing					
9300 Interfund Transfers - IN			763,389		
9400 Sale of or Compensation for Loss of Fixed Assets					
9710 Transfers from Component Units					
9720 Transfers from Primary Governments					
9910 Other Financing Sources Not Listed in the 9000 Series					
9990 Insurance Recoveries					
5120 Debt Service – Refunded Bonds			9,520,000		
5150 Bond Discounts					
5200 Interfund Transfers – Out					
5300 Transfers Out to Component Units/Primary Governments					
Total Other Financing Sources (Uses)			\$1,239,760		

Amounts Expressed in Whole Dollars	<u>Total Governmental Funds</u>
Revenues	
6000 Revenue from Local Sources	27,389,589
7000 Revenue from State Sources	10,870,461
8000 Revenue from Federal Sources	275,327
Total Revenues	\$38,535,377
Expenditures	
1000 Instruction	20,068,467
2000 Support Services	11,963,635
3000 Operation of Non-Instructional Services	841,262
4000 Facilities Acquisition, Construction and Improvement Services	618,108
5110 Debt Service	3,397,640
5130 Refund of Prior Year Revenues / Receipts	53
Total Expenditures	\$36,889,165
Excess (Deficiency) Of Revenues Over Expenditures	\$1,646,212
Other Financing Sources (Uses)	
9110 Face Value of Bonds Issued	
9120 Proceeds from Refunding of Bonds	9,705,000
9130 Bond Premiums	291,371
9200 Proceeds from Extended-Term Financing	
9300 Interfund Transfers - IN	763,389
9400 Sale of or Compensation for Loss of Fixed Assets	
9710 Transfers from Component Units	
9720 Transfers from Primary Governments	
9910 Other Financing Sources Not Listed in the 9000 Series	
9990 Insurance Recoveries	
5120 Debt Service – Refunded Bonds	9,520,000
5150 Bond Discounts	
5200 Interfund Transfers – Out	867,389
5300 Transfers Out to Component Units/Primary Governments	
Total Other Financing Sources (Uses)	\$372,371

Amounts Expressed in Whole Dollars	<u>General Fund</u> <u>(10)</u>	<u>Student Sponsored</u> <u>Activity Fund</u> <u>(21)</u>	<u>Public Purpose Trust</u> <u>(27)</u>	<u>Other Compt Approved</u> <u>(28)</u>	<u>Athletic / Activity</u> <u>(29)</u>
Special And Extraordinary Items					
9920 Special Items – Gains					
9930 Extraordinary Items – Gains					
5520 Special Items – Losses					
5530 Extraordinary Items – Losses					
Net Change In Fund Balances	\$1,621,740				
Fund Balance					
0001 Fund Balance - Beginning of Fiscal Year	6,926,102				
Fund Balance - End Of Year	\$8,547,842				

Amounts Expressed in Whole Dollars	<u>Capital Reserve (690.</u> <u>1850)</u> <u>(31)</u>	<u>Capital Reserve (1431)</u> <u>(32)</u>	<u>Other Capital Projects</u> <u>Fund</u> <u>(39)</u>	<u>Debt Service</u> <u>(40)</u>	<u>Permanent</u> <u>(90)</u>
Special And Extraordinary Items					
9920 Special Items – Gains					
9930 Extraordinary Items – Gains					
5520 Special Items – Losses					
5530 Extraordinary Items – Losses					
Net Change In Fund Balances		(\$12,557)	\$409,400		
Fund Balance					
0001 Fund Balance - Beginning of Fiscal Year		74,509	777,028		
Fund Balance - End Of Year		\$61,952	\$1,186,428		

Amounts Expressed in Whole Dollars	<u>Total Governmental Funds</u>
Special And Extraordinary Items	
9920 Special Items – Gains	
9930 Extraordinary Items – Gains	
5520 Special Items – Losses	
5530 Extraordinary Items – Losses	
Net Change In Fund Balances	\$2,018,583
Fund Balance	
0001 Fund Balance - Beginning of Fiscal Year	7,777,639
Fund Balance - End Of Year	\$9,796,222

Amounts Expressed in Whole Dollars	<u>Food Service</u> <u>(51)</u>	<u>Child Care</u> <u>Operations</u> <u>(52)</u>	<u>Other Enterprise</u> <u>(58)</u>	<u>TOTAL</u>	<u>Internal Service</u> <u>(60)</u>
Assets And Deferred Outflows Of Resources					
Current Assets					
0100 Cash and Cash Equivalents	123,783			123,783	
0110 Investments					
0130 Due From Other Funds					
0141 Due From Other Governments					
0142 State Revenue Receivable	3,344			3,344	
0143 Federal Revenue Receivable	81,965			81,965	
0146 Due from Primary Government					
0147 Due from Component Unit					
0150 Other Receivables	368			368	
0170 Inventories	18,616			18,616	
0180 Prepaid Expenses (Expenditures)					
0190 Other Current Assets	640			640	
Total Current Assets	\$228,716			\$228,716	
Noncurrent Assets					
0211 Land					
0212 Site Improvements (Net)					
0220 Buildings and Building Improvements (Net)					
0230 Machinery, Equipment and Furniture (Net)					
0250 Construction in Progress					
0260 Long Term Prepayments					
0290 Other Noncurrent Assets					
Total Noncurrent Assets					
0910 Deferred Outflows of Resources					
Total Assets And Deferred Outflows Of Resources	\$228,716			\$228,716	

Amounts Expressed in Whole Dollars	<u>Food Service</u> <u>(51)</u>	<u>Child Care</u> <u>Operations</u> <u>(52)</u>	<u>Other Enterprise</u> <u>(58)</u>	<u>TOTAL</u>	<u>Internal Service</u> <u>(60)</u>
Liabilities And Deferred Inflows Of Resources And Net Position					
Current Liabilities					
0400 Due to Other Funds	85,781			85,781	
0411 Due to Other Governments					
0413 Due to Component Unit					
0420 Accounts Payable	128,908			128,908	
0430 Contracts Payable					
0440 Current Portion of Long-Term Debt					
0450 Short-Term Payables					
0461 Accrued Salaries and Benefits					
0462 Payroll Deductions and Withholding					
0480 Unearned Revenues	38,599			38,599	
0490 Other Current Liabilities					
Total Current Liabilities	\$253,288			\$253,288	
Noncurrent Liabilities					
0510 Bonds Payable					
0520 Extended-Term Financing Agreements Payable					
0530 Lease-Purchase Obligations					
0540 Accumulated Compensated Absences					
0550 Authority Lease Obligations					
0560 Other Post-Employment Benefits (OPEB)					
0570 Net Pension Liability					
0599 Other Noncurrent Liabilities					
Total Noncurrent Liabilities					
Total Liabilities	\$253,288			\$253,288	
0950 Deferred Inflows of Resources					
Net Position					
0791 Net Investment in Capital Assets	640			640	
0008 Restricted Net Position (0792 – 0798)					
0799 Unrestricted Net Position	(25,212)			(25,212)	
Total Net Position	(\$24,572)			(\$24,572)	
Total Liabilities And Deferred Inflows Of Resources And Net Position	\$228,716			\$228,716	

Amounts Expressed in Whole Dollars	<u>Food Service</u> <u>(51)</u>	<u>Child Care Operations</u> <u>(52)</u>	<u>Other Enterprise</u> <u>(58)</u>	<u>TOTAL</u>	<u>Internal Service</u> <u>(60)</u>
Operating Revenues					
6600 Food Service Revenue	321,065			321,065	
0071 Charges for Services					
0072 Other Operating Revenue	4,000			4,000	
Total Operating Revenues	\$325,065			\$325,065	
Operating Expenses					
100 Personnel Services – Salaries					
200 Personnel Services – Employee Benefits					
300 Purchased Professional and Technical Services					
400 Purchased Property Services					
500 Other Purchased Services	816,573			816,573	
600 Supplies	52,421			52,421	
740 Depreciation	2,555			2,555	
810 Dues and Fees					
890 Miscellaneous Expenditures					
Total Operating Expenses	\$871,549			\$871,549	
Operating Income (Loss)	(\$546,484)			(\$546,484)	
Non Operating Revenues (Expenses)					
6500 Earnings on Investments	417			417	
6920 Contributions and Donations from Private Sources					
6930 Gains or Losses on Sale of Fixed Assets					
6991 Refunds of a Prior Year Expenditure					
7000 Revenue from State Sources	22,753			22,753	
8000 Revenue from Federal Sources	447,693			447,693	
9990 Insurance Recoveries					
820 Claims and Judgments Against the LEA					
830 Interest					
TOTAL Non Operating Revenues (Expenses)	\$470,863			\$470,863	
Income (Loss) Before Contributions And Transfers	(\$75,621)			(\$75,621)	

Amounts Expressed in Whole Dollars	<u>Food Service</u> <u>(51)</u>	<u>Child Care Operations</u> <u>(52)</u>	<u>Other Enterprise</u> <u>(58)</u>	<u>TOTAL</u>	<u>Internal Service</u> <u>(60)</u>
Contributions, Transfers, and Special and Extraordinary Items					
5200 Interfund Transfers – Out					
5300 Transfers Out to Component Units/Primary Governments					
5520 Special Items – Losses					
5530 Extraordinary Items – Losses					
9300 Interfund Transfers - IN	104,000			104,000	
9500 Capital Contributions					
9700 Transfers IN From Component Units/Primary Governments					
9920 Special Items – Gains					
9930 Extraordinary Items – Gains					
Change In Net Position	\$28,379			\$28,379	
0002 Net Position - Beginning of Fiscal Year	(52,951)			(52,951)	
0003 Accounting Changes / Residual Equity Transfers					
Net Position - End Of Year	(\$24,572)			(\$24,572)	

Amounts Expressed in Whole Dollars	<u>Food Service</u> <u>(51)</u>	<u>Child Care Operations</u> <u>(52)</u>	<u>Other Enterprise</u> <u>(58)</u>	<u>TOTAL</u>	<u>Internal Service(60)</u>
Cash Flows From Operating Activities					
0011 Cash Receipts From Users	325,065			325,065	
0012 Cash Receipts From Assessments Made to Other Funds					
0013 Cash Receipts From Earnings on Investments					
0014 Cash Receipts From Other Operating Revenue					
0015 Cash Payments To Employees For Services					
0016 Cash Payments For Insurance Claims					
0017 Cash Payments To Suppliers For Goods and Services	871,549			871,549	
0018 Cash Payments For Other Operating Expenses					
Net Cash Provided By (Used For) Operating Activities	(\$546,484)			(\$546,484)	
Cash Flows From Non-Capital Financing Activities					
0021 Receipts From Local Sources - 6000					
0022 Receipts From State Sources - 7000	22,753			22,753	
0023 Receipts From Federal Sources -8000	447,693			447,693	
0024 Notes and Loans Received (Repaid)					
0025 Interest Paid on Notes/Loans - 5100-830					
0026 Operating Transfers In (Out)/Residual Equity Trans					
0027 Operating Transfers In (Out) Primary Government / Comp Unit	104,000			104,000	
0028 Receipts From Refund of Prior Year Expenditures - 6991					
0029 Special and Extraordinary Gains (losses)					
0030 Receipts from Insurance Recoveries -9990					
Net Cash Prov By (Used for) Non-Capital Financing Activities	\$574,446			\$574,446	
Cash Flows From Capital and Related Financing Activities					
0031 Payments For Fac Acq, Const, and Imp - 4000					
0032 Gain / (Loss) on Sale of Fixed Assets - 6930					
0033 Proceeds From Extended Term Financing - 9200					
0034 Principal Paid on Financing Agreements					
0035 Interest Paid on Financing Agreements - 5100-830					
0036 (Inc) Dec in Contributed Capital					
Net Cash Prov By (Used for) Capital and Related Financing Activities					
Cash Flows From Investing Activities					
0041 Earnings on Investments - 6500	417			417	
0042 Purchase of Inv Securities / Deposits to Inv Pools					
0043 Receipts From Investment Pool Withdrawals					
0044 Proceeds from Sale and Maturity of Inv Securities					

LEA : 115218303 South Middleton SD

Printed 11/24/2020 12:40:17 PM

0045 Loans Received (Paid)

Net Cash Prov By (Used for) Investing Activities	\$417	\$417
---	--------------	--------------

LEA : 115218303 South Middleton SD

Printed 11/24/2020 12:40:17 PM

	<u>Food Service</u> (51)	<u>Child Care Operations</u> (52)	<u>Other Enterprise</u> (58)	<u>TOTAL</u>	<u>Internal Service</u> (60)
Net Increase (Decrease) in Cash Flows	28,379			28,379	
0004 Cash and Cash Equivalents Beginning of Year	51,746			51,746	
Cash and Cash Equivalents at Year End	\$80,125			\$80,125	

Reconciliation of Operating Income (Loss) To Net Cash Provided by (Used For) Operating Activities

0005 Operating Income (Loss) per REP	(546,484)			(546,484)	
--------------------------------------	-----------	--	--	-----------	--

Adjustments

0051 Depreciation and Net Amortization					
0052 Provision for Uncollectible Accounts					
0053 Other Adjustments					

Effect of Changes in Assets, Liabilities, Deferred Outflows and Deferred Inflows

0054 (Inc) Dec In Accounts Receivable (0120-0150)					
0055 Advances to Other Funds (0160)					
0056 (Inc) Dec in Inventories (0170)					
0057 (Inc) Dec in Prepaid Expenses (0180)					
0058 (Inc) Dec in Other Current or Noncurrent Assets					
0064 Deferred Outflows (0910)					
0059 Inc (Dec) in Accounts Payable (0400-0450)					
0060 Inc (Dec) in Accrued Salaries/Benefits (0461)					
0065 Inc (Dec) in Net Pension Liabilities (0570)					
0066 Inc (Dec) in Other Postemp Benefit Oblig (0560)					
0061 Inc (Dec) in Payroll Deductions/Withholding (0462)					
0062 Inc (Dec) in Unearned Revenue (0480)					
0063 Inc (Dec) in Other Current or Noncurrent Liabilities					
0067 Deferred Inflows (0950)					

Total Adjustments					
Cash Provided By (Used for) Total	(\$546,484)			(\$546,484)	

COMBINED STATEMENT OF CASH FLOWS
SCHEDULE OF NONCASH INVESTING, CAPITAL, AND FINANCING ACTIVITIES

Explanation of Transaction and Balance Sheet Effect	Amount
Total	

LEA : 115218303 South Middleton SD

Printed 11/24/2020 12:40:22 PM

Amounts Expressed in Whole Dollars

	<u>Private Purpose Trust</u> <u>(71)</u>	<u>Investment Trust</u> <u>(72)</u>	<u>Pension Trust</u> <u>(73)</u>	<u>Student Activity Custodial</u> <u>(81)</u>
Assets And Deferred Outflows Of Resources				
Assets				
0100 Cash and Cash Equivalents	192,007			209,501
0110 Investments				
0130 Due From Other Funds				
0140 Due from Other Governments, Primary Government and Component Units				
0150 Other Receivables				1,180
0170 Inventories				
0180 Prepaid Expenses (Expenditures)				
0190 Other Current Assets				
0220 Buildings and Building Improvements (Net)				
0230 Machinery, Equipment and Furniture (Net)				
Total Assets	\$192,007			\$210,681
0910 Deferred Outflows of Resources				
Total Assets And Deferred Outflows Of Resources	\$192,007			\$210,681

LEA : 115218303 South Middleton SD

Printed 11/24/2020 12:40:22 PM

Amounts Expressed in Whole Dollars

Other Custodial
(89)

Fiduciary Component Units
(98)

Total Fiduciary Funds

Assets And Deferred Outflows Of Resources

Assets

0100 Cash and Cash Equivalents			401,508
0110 Investments			
0130 Due From Other Funds			
0140 Due from Other Governments, Primary Government and Component Units			
0150 Other Receivables			1,180
0170 Inventories			
0180 Prepaid Expenses (Expenditures)			
0190 Other Current Assets			
0220 Buildings and Building Improvements (Net)			
0230 Machinery, Equipment and Furniture (Net)			

Total Assets **\$402,688**

0910 Deferred Outflows of Resources

Total Assets And Deferred Outflows Of Resources **\$402,688**

LEA : 115218303 South Middleton SD

Printed 11/24/2020 12:40:22 PM

Amounts Expressed in Whole Dollars

Private Purpose Trust
(71)

Investment Trust
(72)

Pension Trust
(73)

Student Activity Custodial
(81)

Liabilities, Deferred Inflows Of Resources And Net Position

Liabilities

0400 Due to Other Funds				4,648
0410 Due to Other Governments, Primary Government and Component Units				
0420 Accounts Payable				
0430 Contracts Payable				
0450 Short-Term Payables				
0460 Payroll Accruals and Withholdings				
0480 Unearned Revenues				
0490 Other Current Liabilities				206,033

Total Liabilities **\$210,681**

0950 Deferred Inflows of Resources

Net Position

0791 Net Investment in Capital Assets				
0009 Restricted Net Position (0792 – 0798)	192,007			
0799 Unrestricted Net Position				

Total Net Position **\$192,007**

Total Liabilities, Deferred Inflows Of Resources And Net Position **\$192,007** **\$210,681**

LEA : 115218303 South Middleton SD

Printed 11/24/2020 12:40:22 PM

Amounts Expressed in Whole Dollars	<u>Other Custodial</u> <u>(89)</u>	<u>Fiduciary Component Units</u> <u>(98)</u>	<u>Total Fiduciary Funds</u>
Liabilities, Deferred Inflows Of Resources And Net Position			
Liabilities			
0400 Due to Other Funds			4,648
0410 Due to Other Governments, Primary Government and Component Units			
0420 Accounts Payable			
0430 Contracts Payable			
0450 Short-Term Payables			
0460 Payroll Accruals and Withholdings			
0480 Unearned Revenues			
0490 Other Current Liabilities			206,033
Total Liabilities			\$210,681
0950 Deferred Inflows of Resources			
Net Position			
0791 Net Investment in Capital Assets			
0009 Restricted Net Position (0792 – 0798)			192,007
0799 Unrestricted Net Position			
Total Net Position			\$192,007
Total Liabilities, Deferred Inflows Of Resources And Net Position			\$402,688

Amounts Expressed in Whole Dollars	<u>Private Purpose Trust</u> (71)	<u>Investment Trust</u> (72)	<u>Pension Trust</u> (73)	<u>Student Activity</u> <u>Custodial</u> (81)	<u>Other Custodial</u> (89)	<u>Fiduciary Component</u> <u>Units</u> (98)
Additions						
0091 Gifts and Contributions	11,497					
0095 Net Investment Earnings	1,334					
0092 Other Additions						
Deductions						
0093 Scholarships Awarded	13,264					
0094 Other Deductions						
Change In Net Position	(\$433)					
0006 Net Position – Beginning of Fiscal Year	192,440					
0007 Net Position Held in Trust for Pension Benefits						
Net Position - End of Fiscal Year	\$192,007					

Amounts Expressed in Whole Dollars	<u>Total Fiduciary Funds</u>
Additions	
0091 Gifts and Contributions	11,497
0095 Net Investment Earnings	1,334
0092 Other Additions	
Deductions	
0093 Scholarships Awarded	13,264
0094 Other Deductions	
Change in Net Position	(\$433)
0006 Net Position – Beginning of Fiscal Year	192,440
0007 Net Position Held in Trust for Pension Benefits	
Net Position - End of Fiscal Year	\$192,007

	<u>Revenue Reported In Current Year</u>	<u>Current Year Tax Accrual</u>	<u>Prior Year Tax Accrual</u>	<u>Taxes Collected In Current Year</u>
<u>Revenue from Local Sources</u>				
6111 Current Real Estate Taxes	19,746,540.12			19,746,540.12
6112 Interim Real Estate Taxes	189,447.29			189,447.29
6113 Public Utility Realty Taxes	23,012.73			23,012.73
6114 Payments in Lieu of Current Taxes - State / Local	401,914.23			401,914.23
6143 Current Act 511 Local Services Taxes	50,255.71			50,255.71
6151 Current Act 511 Earned Income Taxes	4,911,525.39			4,911,525.39
6153 Current Act 511 Real Estate Transfer Taxes	706,028.45			706,028.45
6411 Delinquent Real Estate Taxes	477,893.04			477,893.04
6500 Earnings on Investments	184,870.12			
6700 Revenues from LEA Activities	64,727.75			
6831 Federal Revenue Received from Other Pennsylvania Public LEAs	3,500.00			
6832 Federal IDEA Revenue Received as Pass Through	345,700.96			
6910 Rentals	52,862.50			
6920 Contributions and Donations from Private Sources	24,500.00			
6941 Regular Day School Tuition	18,525.00			
6942 Summer School Tuition	1,965.00			
6944 Receipts from Other LEAs in Pennsylvania - Education	153,997.58			
6999 Other Revenues Not Specified Above	22,101.59			
TOTAL Revenue from Local Sources	\$27,379,367.46			\$26,506,616.96

**Revenue Reported
In Current Year**

Revenue from State Sources

7111 Basic Education Funding-Formula	4,565,315.25		
7112 Basic Education Funding-Social Security	485,999.18		
7160 Tuition for Orphans Subsidy	20,877.05		
7220 Vocational Education	45,368.50		
7271 Special Education funds for School-Aged Pupils	1,192,886.44		
7311 Pupil Transportation Subsidy	651,321.86		
7312 Nonpublic and Charter School Pupil Transportation Subsidy	28,490.00		
7320 Rental and Sinking Fund Payments / Building Reimbursement Subsidy	764,680.33		
7330 Health Services (Medical, Dental, Nurse, Act 25)	47,055.32		
7340 State Property Tax Reduction Allocation	539,018.66		
7361 School Safety and Security Grants	16,097.05		
7505 Ready to Learn Block Grant	208,431.00		
7820 State Share of Retirement Contributions	2,304,919.98		
TOTAL Revenue from State Sources	\$10,870,460.62		

**Revenue Reported
In Current Year**

Revenue from Federal Sources

8514 NCLB, Title I - Improving the Academic Achievement of the Disadvantaged	211,068.27		
8515 NCLB, Title II - Preparing, Training and Recruiting High Quality Teachers and Principals	48,221.00		
8517 NCLB, Title IV - 21St Century Schools	16,037.85		
TOTAL Revenue from Federal Sources	\$275,327.12		
TOTAL FROM ALL SOURCES	\$38,525,155.20		\$26,506,616.96

LEA : 115218303 South Middleton SD

Printed 11/24/2020 12:40:41 PM

	<u>General Fund (10)</u>	<u>Student Sponsored Activity Fund (21)</u>	<u>Public Purpose Trust (27)</u>	<u>Other Compt Approved (28)</u>	<u>Athletic / Activity (29)</u>	<u>Capital Reserve (690, 1850) (31)</u>
6000 Revenue from Local Sources						
6111 Current Real Estate Taxes	19,746,540.12					
6112 Interim Real Estate Taxes	189,447.29					
6113 Public Utility Realty Taxes	23,012.73					
6114 Payments in Lieu of Current Taxes - State / Local	401,914.23					
6143 Current Act 511 Local Services Taxes	50,255.71					
6151 Current Act 511 Earned Income Taxes	4,911,525.39					
6153 Current Act 511 Real Estate Transfer Taxes	706,028.45					
6411 Delinquent Real Estate Taxes	477,893.04					
6500 Earnings on Investments	184,870.12					
6700 Revenues from LEA Activities	64,727.75					
6831 Federal Revenue Received from Other Pennsylvania Public LEAs	3,500.00					
6832 Federal IDEA Revenue Received as Pass Through	345,700.96					
6910 Rentals	52,862.50					
6920 Contributions and Donations from Private Sources	24,500.00					
6941 Regular Day School Tuition	18,525.00					
6942 Summer School Tuition	1,965.00					
6944 Receipts from Other LEAs in Pennsylvania - Education	153,997.58					
6999 Other Revenues Not Specified Above	22,101.59					
6000 Total Revenue from Local Sources	\$27,379,367.46					
7000 Revenue from State Sources						
7111 Basic Education Funding-Formula	4,565,315.25					
7112 Basic Education Funding-Social Security	485,999.18					
7160 Tuition for Orphans Subsidy	20,877.05					
7220 Vocational Education	45,368.50					
7271 Special Education funds for School-Aged Pupils	1,192,886.44					
7311 Pupil Transportation Subsidy	651,321.86					
7312 Nonpublic and Charter School Pupil Transportation Subsidy	28,490.00					
7320 Rental and Sinking Fund Payments / Building Reimbursement Subsidy	764,680.33					
7330 Health Services (Medical, Dental, Nurse, Act 25)	47,055.32					
7340 State Property Tax Reduction Allocation	539,018.66					
7361 School Safety and Security Grants	16,097.05					
7505 Ready to Learn Block Grant	208,431.00					
7820 State Share of Retirement Contributions	2,304,919.98					
7000 Total Revenue from State Sources	\$10,870,460.62					

LEA : 115218303 South Middleton SD

Printed 11/24/2020 12:40:41 PM

	<u>Capital Reserve</u> <u>(1431) (32)</u>	<u>Other Capital</u> <u>Projects Fund (39)</u>	<u>Debt Service (40)</u>	<u>Permanent (90)</u>	<u>Total</u>
6000 Revenue from Local Sources					
6111 Current Real Estate Taxes					19,746,540.12
6112 Interim Real Estate Taxes					189,447.29
6113 Public Utility Realty Taxes					23,012.73
6114 Payments in Lieu of Current Taxes - State / Local					401,914.23
6143 Current Act 511 Local Services Taxes					50,255.71
6151 Current Act 511 Earned Income Taxes					4,911,525.39
6153 Current Act 511 Real Estate Transfer Taxes					706,028.45
6411 Delinquent Real Estate Taxes					477,893.04
6500 Earnings on Investments	118.83	10,103.33			195,092.28
6700 Revenues from LEA Activities					64,727.75
6831 Federal Revenue Received from Other Pennsylvania Public LEAs					3,500.00
6832 Federal IDEA Revenue Received as Pass Through					345,700.96
6910 Rentals					52,862.50
6920 Contributions and Donations from Private Sources					24,500.00
6941 Regular Day School Tuition					18,525.00
6942 Summer School Tuition					1,965.00
6944 Receipts from Other LEAs in Pennsylvania - Education					153,997.58
6999 Other Revenues Not Specified Above					22,101.59
6000 Total Revenue from Local Sources	\$118.83	\$10,103.33			\$27,389,589.62
7000 Revenue from State Sources					
7111 Basic Education Funding-Formula					4,565,315.25
7112 Basic Education Funding-Social Security					485,999.18
7160 Tuition for Orphans Subsidy					20,877.05
7220 Vocational Education					45,368.50
7271 Special Education funds for School-Aged Pupils					1,192,886.44
7311 Pupil Transportation Subsidy					651,321.86
7312 Nonpublic and Charter School Pupil Transportation Subsidy					28,490.00
7320 Rental and Sinking Fund Payments / Building Reimbursement Subsidy					764,680.33
7330 Health Services (Medical, Dental, Nurse, Act 25)					47,055.32
7340 State Property Tax Reduction Allocation					539,018.66
7361 School Safety and Security Grants					16,097.05
7505 Ready to Learn Block Grant					208,431.00
7820 State Share of Retirement Contributions					2,304,919.98
7000 Total Revenue from State Sources					\$10,870,460.62

LEA : 115218303 South Middleton SD

Printed 11/24/2020 12:40:41 PM

	<u>General Fund (10)</u>	<u>Student Sponsored Activity Fund (21)</u>	<u>Public Purpose Trust (27)</u>	<u>Other Compt Approved (28)</u>	<u>Athletic / Activity (29)</u>	<u>Capital Reserve (690.1850) (31)</u>
8000 Revenue from Federal Sources						
8514 NCLB, Title I - Improving the Academic Achievement of the Disadvantaged	211,068.27					
8515 NCLB, Title II - Preparing, Training and Recruiting High Quality Teachers and Principals	48,221.00					
8517 NCLB, Title IV - 21st Century Schools	16,037.85					
8000 Total Revenue from Federal Sources	\$275,327.12					
9000 Other Financing Sources						
9120 Proceeds from Refunding of Bonds						
9130 Bond Premiums						
9310 General Fund Transfers						
9000 Total Other Financing Sources						
Total From All Sources	\$38,525,155.20					

	<u>Capital Reserve</u> <u>(1431) (32)</u>	<u>Other Capital</u> <u>Projects Fund (39)</u>	<u>Debt Service (40)</u>	<u>Permanent (90)</u>	<u>Total</u>
8000 Revenue from Federal Sources					
8514 NCLB, Title I - Improving the Academic Achievement of the Disadvantaged					211,068.27
8515 NCLB, Title II - Preparing, Training and Recruiting High Quality Teachers and Principals					48,221.00
8517 NCLB, Title IV - 21st Century Schools					16,037.85
8000 Total Revenue from Federal Sources					\$275,327.12
9000 Other Financing Sources					
9120 Proceeds from Refunding of Bonds		9,705,000.00			9,705,000.00
9130 Bond Premiums		291,371.15			291,371.15
9310 General Fund Transfers		763,389.00			763,389.00
9000 Total Other Financing Sources		\$10,759,760.15			\$10,759,760.15
Total From All Sources	\$118.83	\$10,769,863.48			\$49,295,137.51

	<u>General Fund (10)</u>	<u>Student Sponsored Activity Fund (21)</u>	<u>Public Purpose Trust (27)</u>	<u>Other Compt Approved (28)</u>	<u>Athletic / Activity (29)</u>	<u>Capital Reserve (690. 1850) (31)</u>
Revenue from Local Sources	27,379,367.46					
Revenue from State Sources	10,870,460.62					
Revenue from Federal Sources	275,327.12					
Other Financing Sources						
Total From All Sources	\$38,525,155.20					

	<u>Capital Reserve (1431)</u> <u>(32)</u>	<u>Other Capital Projects</u> <u>Fund (39)</u>	<u>Debt Service (40)</u>	<u>Permanent (90)</u>	<u>Total</u>
Revenue from Local Sources	118.83	10,103.33			27,389,589.62
Revenue from State Sources					10,870,460.62
Revenue from Federal Sources					275,327.12
Other Financing Sources		10,759,760.15			10,759,760.15
Total From All Sources	\$118.83	\$10,769,863.48			\$49,295,137.51

General Fund (10)

	<u>Total</u>
1000 Instruction	
100 Personnel Services – Salaries	
100 Personnel Services – Salaries	9,781,237.11
Total Personnel Services – Salaries	\$9,781,237.11
200 Personnel Services – Employee Benefits	
210 Group Insurance – Contracted Provider	1,837,672.12
220 Social Security Contributions	722,181.46
230 PSERS Retirement Contributions	3,280,696.00
250 Unemployment Compensation	12,297.31
260 Workers' Compensation	75,474.00
270 Group Insurance – Self-Insurance	99,697.40
292 Health Savings Accounts	404,445.51
Total Personnel Services – Employee Benefits	\$6,432,463.80
300 Purchased Professional and Technical Services	
322 Professional Educational Services – Ius	260,901.37
323 Professional Educational Services – Other Educational Agencies	23,133.43
329 Professional Educational Services – Other	721,176.28
330 Other Professional Services	3,476.24
Total Purchased Professional and Technical Services	\$1,008,687.32
400 Purchased Property Services	
430 Repairs and Maintenance Services	5,554.48
Total Purchased Property Services	\$5,554.48
500 Other Purchased Services	
510 Student Transportation Services	8,261.94
561 Tuition To Other School Districts Within the State	523,959.61
562 Tuition To Pennsylvania Charter Schools	747,399.86
563 Tuition To Nonpublic Schools	559,768.61
564 Tuition To Career and Technology Centers	399,640.00
566 Tuition To Institutions of Higher Education and Technical Institutes	99,151.00
567 Tuition To Approved Private Schools (APS) and PA Chartered Schools for the Deaf and Blind	43,188.68
568 Tuition To Private Residential Rehabilitative Institutions (PRRI) [In-State] and Detention Centers	90.15
569 Tuition – Other	147,866.56
580 Travel	1,343.97
Total Other Purchased Services	\$2,530,670.38
600 Supplies	
610 General Supplies	156,433.40
640 Books and Periodicals	81,002.35
650 Supplies & Fees – Technology Related	62,875.71
Total Supplies	\$300,311.46
800 Other Objects	
810 Dues and Fees	6,088.34
890 Miscellaneous Expenditures	3,454.36

General Fund (10)

1000 Instruction

	<u>Total</u>
Total Other Objects	\$9,542.70
Total 1000 Instruction	\$20,068,467.25

General Fund (10)

1100 Regular Programs – Elementary / Secondary

	<u>Elementary</u>	<u>Secondary</u>	<u>Federal</u>	<u>Total</u>
100 Personnel Services – Salaries				
100 Personnel Services – Salaries	3,644,368.55	4,097,153.45	164,649.34	7,906,171.34
Total Personnel Services – Salaries	\$3,644,368.55	\$4,097,153.45	\$164,649.34	\$7,906,171.34
200 Personnel Services – Employee Benefits				
210 Group Insurance – Contracted Provider	601,679.10	705,205.13	31,666.73	1,338,550.96
220 Social Security Contributions	272,589.91	302,963.27	8,628.58	584,181.76
230 PSERS Retirement Contributions	1,249,197.13	1,386,019.67	17,003.42	2,652,220.22
250 Unemployment Compensation	8,395.05	642.94		9,037.99
260 Workers' Compensation	44,056.03	31,417.97		75,474.00
270 Group Insurance – Self-Insurance	31,288.92	34,893.39	825.80	67,008.11
292 Health Savings Accounts	151,779.07	157,166.44	6,000.00	314,945.51
Total Personnel Services – Employee Benefits	\$2,358,985.21	\$2,618,308.81	\$64,124.53	\$5,041,418.55
300 Purchased Professional and Technical Services				
322 Professional Educational Services – Ius	109,217.51	3,209.08	380.00	112,806.59
323 Professional Educational Services – Other Educational Agencies	2,297.00			2,297.00
329 Professional Educational Services – Other	188,741.74	103,217.59		291,959.33
330 Other Professional Services	65.03	53.21		118.24
Total Purchased Professional and Technical Services	\$300,321.28	\$106,479.88	\$380.00	\$407,181.16
400 Purchased Property Services				
430 Repairs and Maintenance Services	1,346.76	4,207.72		5,554.48
Total Purchased Property Services	\$1,346.76	\$4,207.72		\$5,554.48
500 Other Purchased Services				
510 Student Transportation Services	95.48	5,837.74		5,933.22
562 Tuition To Pennsylvania Charter Schools	238,459.61	195,103.31		433,562.92
563 Tuition To Nonpublic Schools	227,036.63	5,706.49		232,743.12
568 Tuition To Private Residential Rehabilitative Institutions (PRRI) [In-State] and Detention Centers	49.58	40.57		90.15
569 Tuition – Other	8,857.67	138,052.33		146,910.00
580 Travel	267.84	204.29		472.13
Total Other Purchased Services	\$474,766.81	\$344,944.73		\$819,711.54
600 Supplies				
610 General Supplies	47,454.61	99,712.56	623.72	147,790.89
640 Books and Periodicals	27,833.40	24,113.83	25,149.07	77,096.30
650 Supplies & Fees – Technology Related	30,320.28	24,395.43		54,715.71
Total Supplies	\$105,608.29	\$148,221.82	\$25,772.79	\$279,602.90
800 Other Objects				
810 Dues and Fees	199.23	5,859.11		6,058.34
890 Miscellaneous Expenditures		1,870.28		1,870.28
Total Other Objects	\$199.23	\$7,729.39		\$7,928.62
Total 1100 Regular Programs – Elementary / Secondary	\$6,885,596.13	\$7,327,045.80	\$254,926.66	\$14,467,568.59

General Fund (10)

1110 Regular Programs

	<u>Elementary</u>	<u>Secondary</u>	<u>Federal</u>	<u>Total</u>
100 Personnel Services – Salaries				
100 Personnel Services – Salaries	3,644,368.55	4,097,153.45	164,649.34	7,906,171.34
Total Personnel Services – Salaries	\$3,644,368.55	\$4,097,153.45	\$164,649.34	\$7,906,171.34
200 Personnel Services – Employee Benefits				
210 Group Insurance – Contracted Provider	601,679.10	705,205.13	31,666.73	1,338,550.96
220 Social Security Contributions	272,589.91	302,963.27	8,628.58	584,181.76
230 PSERS Retirement Contributions	1,249,197.13	1,386,019.67	17,003.42	2,652,220.22
250 Unemployment Compensation	8,395.05	642.94		9,037.99
260 Workers' Compensation	44,056.03	31,417.97		75,474.00
270 Group Insurance – Self-Insurance	31,288.92	34,893.39	825.80	67,008.11
292 Health Savings Accounts	151,779.07	157,166.44	6,000.00	314,945.51
Total Personnel Services – Employee Benefits	\$2,358,985.21	\$2,618,308.81	\$64,124.53	\$5,041,418.55
300 Purchased Professional and Technical Services				
322 Professional Educational Services – Ius	109,217.51	3,209.08	380.00	112,806.59
323 Professional Educational Services – Other Educational Agencies	2,297.00			2,297.00
329 Professional Educational Services – Other	188,741.74	103,217.59		291,959.33
330 Other Professional Services	65.03	53.21		118.24
Total Purchased Professional and Technical Services	\$300,321.28	\$106,479.88	\$380.00	\$407,181.16
400 Purchased Property Services				
430 Repairs and Maintenance Services	1,346.76	4,207.72		5,554.48
Total Purchased Property Services	\$1,346.76	\$4,207.72		\$5,554.48
500 Other Purchased Services				
510 Student Transportation Services	95.48	5,837.74		5,933.22
562 Tuition To Pennsylvania Charter Schools	238,459.61	195,103.31		433,562.92
563 Tuition To Nonpublic Schools	227,036.63	5,706.49		232,743.12
568 Tuition To Private Residential Rehabilitative Institutions (PRRI) [In-State] and Detention Centers	49.58	40.57		90.15
569 Tuition – Other	8,857.67	138,052.33		146,910.00
580 Travel	267.84	204.29		472.13
Total Other Purchased Services	\$474,766.81	\$344,944.73		\$819,711.54
600 Supplies				
610 General Supplies	47,454.61	99,712.56	623.72	147,790.89
640 Books and Periodicals	27,833.40	24,113.83	25,149.07	77,096.30
650 Supplies & Fees – Technology Related	30,320.28	24,395.43		54,715.71
Total Supplies	\$105,608.29	\$148,221.82	\$25,772.79	\$279,602.90
800 Other Objects				
810 Dues and Fees	199.23	5,859.11		6,058.34
890 Miscellaneous Expenditures		1,870.28		1,870.28
Total Other Objects	\$199.23	\$7,729.39		\$7,928.62
Total 1110 Regular Programs	\$6,885,596.13	\$7,327,045.80	\$254,926.66	\$14,467,568.59

General Fund (10)

1200 Special Programs – Elementary / Secondary	<u>Elementary</u>	<u>Secondary</u>	<u>Federal</u>	<u>Total</u>
100 Personnel Services – Salaries				
100 Personnel Services – Salaries	650,274.97	965,194.32	255,404.00	1,870,873.29
Total Personnel Services – Salaries	\$650,274.97	\$965,194.32	\$255,404.00	\$1,870,873.29
200 Personnel Services – Employee Benefits				
210 Group Insurance – Contracted Provider	173,714.09	286,859.19	38,547.88	499,121.16
220 Social Security Contributions	47,967.63	70,414.79	19,296.51	137,678.93
230 PSERS Retirement Contributions	274,870.90	328,100.18	24,067.09	627,038.17
250 Unemployment Compensation	2,195.80	1,063.52		3,259.32
270 Group Insurance – Self-Insurance	10,343.29	21,460.52	885.48	32,689.29
292 Health Savings Accounts	35,865.95	46,134.05	7,500.00	89,500.00
Total Personnel Services – Employee Benefits	\$544,957.66	\$754,032.25	\$90,296.96	\$1,389,286.87
300 Purchased Professional and Technical Services				
322 Professional Educational Services – Ius	6,581.07	137,633.71	3,500.00	147,714.78
323 Professional Educational Services – Other Educational Agencies	4,150.69	16,685.74		20,836.43
329 Professional Educational Services – Other	201,775.62	227,441.33		429,216.95
Total Purchased Professional and Technical Services	\$212,507.38	\$381,760.78	\$3,500.00	\$597,768.16
500 Other Purchased Services				
510 Student Transportation Services	222.39	2,106.33		2,328.72
561 Tuition To Other School Districts Within the State	381,347.72	121,866.72		503,214.44
562 Tuition To Pennsylvania Charter Schools	172,610.32	141,226.62		313,836.94
563 Tuition To Nonpublic Schools	80,410.40	224,493.41	3,483.00	308,386.81
567 Tuition To Approved Private Schools (APS) and PA Chartered Schools for the Deaf and Blind	23,753.77	19,434.91		43,188.68
569 Tuition – Other		956.56		956.56
580 Travel	717.17	154.67		871.84
Total Other Purchased Services	\$659,061.77	\$510,239.22	\$3,483.00	\$1,172,783.99
600 Supplies				
610 General Supplies	3,781.30	4,861.21		8,642.51
640 Books and Periodicals	1,959.20	1,946.85		3,906.05
650 Supplies & Fees – Technology Related			8,160.00	8,160.00
Total Supplies	\$5,740.50	\$6,808.06	\$8,160.00	\$20,708.56
800 Other Objects				
810 Dues and Fees	30.00			30.00
890 Miscellaneous Expenditures	1,584.08			1,584.08
Total Other Objects	\$1,614.08			\$1,614.08
Total 1200 Special Programs – Elementary / Secondary	\$2,074,156.36	\$2,618,034.63	\$360,843.96	\$5,053,034.95

General Fund (10)

1210 Life Skills Support

	<u>Elementary</u>	<u>Secondary</u>	<u>Federal</u>	<u>Total</u>
100 Personnel Services – Salaries				
100 Personnel Services – Salaries	23,276.07	239,342.21		262,618.28
Total Personnel Services – Salaries	\$23,276.07	\$239,342.21		\$262,618.28
200 Personnel Services – Employee Benefits				
210 Group Insurance – Contracted Provider	7,025.46	73,576.05		80,601.51
220 Social Security Contributions	1,740.91	17,165.75		18,906.66
230 PSERS Retirement Contributions	13,675.59	74,068.97		87,744.56
250 Unemployment Compensation		1,063.52		1,063.52
270 Group Insurance – Self-Insurance	444.64	8,906.24		9,350.88
292 Health Savings Accounts	999.90	12,000.10		13,000.00
Total Personnel Services – Employee Benefits	\$23,886.50	\$186,780.63		\$210,667.13
300 Purchased Professional and Technical Services				
323 Professional Educational Services – Other Educational Agencies		13,202.83		13,202.83
329 Professional Educational Services – Other	16,259.41	58,824.64		75,084.05
Total Purchased Professional and Technical Services	\$16,259.41	\$72,027.47		\$88,286.88
500 Other Purchased Services				
510 Student Transportation Services		1,384.38		1,384.38
561 Tuition To Other School Districts Within the State	94,582.11	19,511.64		114,093.75
569 Tuition – Other		700.56		700.56
580 Travel		119.87		119.87
Total Other Purchased Services	\$94,582.11	\$21,716.45		\$116,298.56
600 Supplies				
610 General Supplies	396.15	2,381.47		2,777.62
640 Books and Periodicals	62.13	267.36		329.49
Total Supplies	\$458.28	\$2,648.83		\$3,107.11
Total 1210 Life Skills Support	\$158,462.37	\$522,515.59		\$680,977.96

General Fund (10)

1220 Sensory Support

	<u>Elementary</u>	<u>Secondary</u>	<u>Federal</u>	<u>Total</u>
100 Personnel Services – Salaries				
100 Personnel Services – Salaries	172,867.45	35,668.45		208,535.90
Total Personnel Services – Salaries	\$172,867.45	\$35,668.45		\$208,535.90
200 Personnel Services – Employee Benefits				
210 Group Insurance – Contracted Provider	38,142.69	4,037.48		42,180.17
220 Social Security Contributions	12,728.87	2,678.31		15,407.18
230 PSERS Retirement Contributions	55,680.60	11,618.15		67,298.75
270 Group Insurance – Self-Insurance	4,273.07			4,273.07
292 Health Savings Accounts	6,249.98	1,250.02		7,500.00
Total Personnel Services – Employee Benefits	\$117,075.21	\$19,583.96		\$136,659.17
300 Purchased Professional and Technical Services				
323 Professional Educational Services – Other Educational Agencies	4,137.36	2,210.24		6,347.60
Total Purchased Professional and Technical Services	\$4,137.36	\$2,210.24		\$6,347.60
500 Other Purchased Services				
561 Tuition To Other School Districts Within the State	4,157.86			4,157.86
563 Tuition To Nonpublic Schools	2,486.43			2,486.43
580 Travel	20.70			20.70
Total Other Purchased Services	\$6,664.99			\$6,664.99
600 Supplies				
610 General Supplies	914.05	269.86		1,183.91
640 Books and Periodicals	200.71	56.60		257.31
Total Supplies	\$1,114.76	\$326.46		\$1,441.22
800 Other Objects				
890 Miscellaneous Expenditures	1,584.08			1,584.08
Total Other Objects	\$1,584.08			\$1,584.08
Total 1220 Sensory Support	\$303,443.85	\$57,789.11		\$361,232.96

General Fund (10)

1230 Emotional Support

	<u>Elementary</u>	<u>Secondary</u>	<u>Federal</u>	<u>Total</u>
100 Personnel Services – Salaries				
100 Personnel Services – Salaries	91,326.14	149,567.30		240,893.44
Total Personnel Services – Salaries	\$91,326.14	\$149,567.30		\$240,893.44
200 Personnel Services – Employee Benefits				
210 Group Insurance – Contracted Provider	9,694.03	20,410.20		30,104.23
220 Social Security Contributions	6,895.88	11,322.85		18,218.73
230 PSERS Retirement Contributions	31,774.98	50,227.45		82,002.43
270 Group Insurance – Self-Insurance	345.95	1,350.07		1,696.02
292 Health Savings Accounts	1,999.96	4,000.04		6,000.00
Total Personnel Services – Employee Benefits	\$50,710.80	\$87,310.61		\$138,021.41
300 Purchased Professional and Technical Services				
322 Professional Educational Services – lus	49.66	134,427.80		134,477.46
323 Professional Educational Services – Other Educational Agencies		1,246.00		1,246.00
329 Professional Educational Services – Other	95,004.19	29,426.74		124,430.93
Total Purchased Professional and Technical Services	\$95,053.85	\$165,100.54		\$260,154.39
500 Other Purchased Services				
510 Student Transportation Services		450.00		450.00
561 Tuition To Other School Districts Within the State	268,502.17	102,355.08		370,857.25
563 Tuition To Nonpublic Schools	77,923.97	224,493.41	3,483.00	305,900.38
569 Tuition – Other		256.00		256.00
Total Other Purchased Services	\$346,426.14	\$327,554.49	\$3,483.00	\$677,463.63
600 Supplies				
610 General Supplies	758.13	81.04		839.17
640 Books and Periodicals		278.64		278.64
Total Supplies	\$758.13	\$359.68		\$1,117.81
Total 1230 Emotional Support	\$584,275.06	\$729,892.62	\$3,483.00	\$1,317,650.68

General Fund (10)

1240 Academic Support

	<u>Elementary</u>	<u>Secondary</u>	<u>Federal</u>	<u>Total</u>
100 Personnel Services – Salaries				
100 Personnel Services – Salaries	362,805.31	469,235.54	255,404.00	1,087,444.85
Total Personnel Services – Salaries	\$362,805.31	\$469,235.54	\$255,404.00	\$1,087,444.85
200 Personnel Services – Employee Benefits				
210 Group Insurance – Contracted Provider	118,851.91	152,968.76	38,547.88	310,368.55
220 Social Security Contributions	26,601.97	34,017.96	19,296.51	79,916.44
230 PSERS Retirement Contributions	173,739.73	168,121.98	24,067.09	365,928.80
250 Unemployment Compensation	2,195.80			2,195.80
270 Group Insurance – Self-Insurance	5,279.63	9,204.11	885.48	15,369.22
292 Health Savings Accounts	26,616.11	22,883.89	7,500.00	57,000.00
Total Personnel Services – Employee Benefits	\$353,285.15	\$387,196.70	\$90,296.96	\$830,778.81
300 Purchased Professional and Technical Services				
322 Professional Educational Services – Ius	6,531.41		3,500.00	10,031.41
323 Professional Educational Services – Other Educational Agencies	13.33	26.67		40.00
329 Professional Educational Services – Other	90,512.02	85,868.01		176,380.03
Total Purchased Professional and Technical Services	\$97,056.76	\$85,894.68	\$3,500.00	\$186,451.44
500 Other Purchased Services				
562 Tuition To Pennsylvania Charter Schools	172,610.32	141,226.62		313,836.94
580 Travel	696.47	34.80		731.27
Total Other Purchased Services	\$173,306.79	\$141,261.42		\$314,568.21
600 Supplies				
610 General Supplies	1,547.69	895.58		2,443.27
640 Books and Periodicals	1,696.36	1,313.12		3,009.48
650 Supplies & Fees – Technology Related			8,160.00	8,160.00
Total Supplies	\$3,244.05	\$2,208.70	\$8,160.00	\$13,612.75
800 Other Objects				
810 Dues and Fees	30.00			30.00
Total Other Objects	\$30.00			\$30.00
Total 1240 Academic Support	\$989,728.06	\$1,085,797.04	\$357,360.96	\$2,432,886.06

General Fund (10)

	<u>Elementary</u>	<u>Secondary</u>	<u>Federal</u>	<u>Total</u>
1241 Learning Support – Public				
100 Personnel Services – Salaries				
100 Personnel Services – Salaries	279,036.85	410,524.16	255,404.00	944,965.01
Total Personnel Services – Salaries	\$279,036.85	\$410,524.16	\$255,404.00	\$944,965.01
200 Personnel Services – Employee Benefits				
210 Group Insurance – Contracted Provider	99,196.88	134,723.27	38,547.88	272,468.03
220 Social Security Contributions	20,501.95	29,658.34	19,296.51	69,456.80
230 PSERS Retirement Contributions	145,676.47	147,328.90	24,067.09	317,072.46
250 Unemployment Compensation	2,195.80			2,195.80
270 Group Insurance – Self-Insurance	4,780.99	7,057.63	885.48	12,724.10
292 Health Savings Accounts	23,499.45	20,000.55	7,500.00	51,000.00
Total Personnel Services – Employee Benefits	\$295,851.54	\$338,768.69	\$90,296.96	\$724,917.19
300 Purchased Professional and Technical Services				
322 Professional Educational Services – Ius	6,531.41		3,500.00	10,031.41
329 Professional Educational Services – Other	89,628.20	85,868.01		175,496.21
Total Purchased Professional and Technical Services	\$96,159.61	\$85,868.01	\$3,500.00	\$185,527.62
500 Other Purchased Services				
562 Tuition To Pennsylvania Charter Schools	172,610.32	141,226.62		313,836.94
580 Travel	696.47			696.47
Total Other Purchased Services	\$173,306.79	\$141,226.62		\$314,533.41
600 Supplies				
610 General Supplies	1,127.38	822.39		1,949.77
640 Books and Periodicals	1,366.17	1,255.68		2,621.85
650 Supplies & Fees – Technology Related			8,160.00	8,160.00
Total Supplies	\$2,493.55	\$2,078.07	\$8,160.00	\$12,731.62
Total 1241 Learning Support – Public	\$846,848.34	\$978,465.55	\$357,360.96	\$2,182,674.85

General Fund (10)

1243 Gifted Support

	<u>Elementary</u>	<u>Secondary</u>	<u>Federal</u>	<u>Total</u>
100 Personnel Services – Salaries				
100 Personnel Services – Salaries	83,768.46	58,711.38		142,479.84
Total Personnel Services – Salaries	\$83,768.46	\$58,711.38		\$142,479.84
200 Personnel Services – Employee Benefits				
210 Group Insurance – Contracted Provider	19,655.03	18,245.49		37,900.52
220 Social Security Contributions	6,100.02	4,359.62		10,459.64
230 PSERS Retirement Contributions	28,063.26	20,793.08		48,856.34
270 Group Insurance – Self-Insurance	498.64	2,146.48		2,645.12
292 Health Savings Accounts	3,116.66	2,883.34		6,000.00
Total Personnel Services – Employee Benefits	\$57,433.61	\$48,428.01		\$105,861.62
300 Purchased Professional and Technical Services				
323 Professional Educational Services – Other Educational Agencies	13.33	26.67		40.00
329 Professional Educational Services – Other	883.82			883.82
Total Purchased Professional and Technical Services	\$897.15	\$26.67		\$923.82
500 Other Purchased Services				
580 Travel		34.80		34.80
Total Other Purchased Services		\$34.80		\$34.80
600 Supplies				
610 General Supplies	420.31	73.19		493.50
640 Books and Periodicals	330.19	57.44		387.63
Total Supplies	\$750.50	\$130.63		\$881.13
800 Other Objects				
810 Dues and Fees	30.00			30.00
Total Other Objects	\$30.00			\$30.00
Total 1243 Gifted Support	\$142,879.72	\$107,331.49		\$250,211.21

General Fund (10)

1270 Multi-Handicapped Support

	<u>Elementary</u>	<u>Secondary</u>	<u>Federal</u>	<u>Total</u>
100 Personnel Services – Salaries				
100 Personnel Services – Salaries		71,380.82		71,380.82
Total Personnel Services – Salaries		\$71,380.82		\$71,380.82
200 Personnel Services – Employee Benefits				
210 Group Insurance – Contracted Provider		35,866.70		35,866.70
220 Social Security Contributions		5,229.92		5,229.92
230 PSERS Retirement Contributions		24,063.63		24,063.63
270 Group Insurance – Self-Insurance		2,000.10		2,000.10
292 Health Savings Accounts		6,000.00		6,000.00
Total Personnel Services – Employee Benefits		\$73,160.35		\$73,160.35
300 Purchased Professional and Technical Services				
322 Professional Educational Services – lus		3,205.91		3,205.91
329 Professional Educational Services – Other		53,321.94		53,321.94
Total Purchased Professional and Technical Services		\$56,527.85		\$56,527.85
500 Other Purchased Services				
510 Student Transportation Services	222.39	271.95		494.34
561 Tuition To Other School Districts Within the State	14,105.58			14,105.58
Total Other Purchased Services	\$14,327.97	\$271.95		\$14,599.92
600 Supplies				
610 General Supplies	154.81	1,233.26		1,388.07
640 Books and Periodicals		31.13		31.13
Total Supplies	\$154.81	\$1,264.39		\$1,419.20
Total 1270 Multi-Handicapped Support	\$14,482.78	\$202,605.36		\$217,088.14

LEA : 115218303 South Middleton SD

Printed 11/24/2020 12:40:57 PM

General Fund (10)

1290 Special Programs - Other Support

500 Other Purchased Services

567 Tuition To Approved Private Schools (APS) and PA Chartered Schools for the Deaf and Blind

Total Other Purchased Services

600 Supplies

610 General Supplies

Total Supplies

Total 1290 Special Programs - Other Support

	<u>Elementary</u>	<u>Secondary</u>	<u>Federal</u>	<u>Total</u>
567 Tuition To Approved Private Schools (APS) and PA Chartered Schools for the Deaf and Blind	23,753.77	19,434.91		43,188.68
Total Other Purchased Services	\$23,753.77	\$19,434.91		\$43,188.68
610 General Supplies	10.47			10.47
Total Supplies	\$10.47			\$10.47
Total 1290 Special Programs - Other Support	\$23,764.24	\$19,434.91		\$43,199.15

LEA : 115218303 South Middleton SD

Printed 11/24/2020 12:40:57 PM

General Fund (10)

1300 Vocational Education

500 Other Purchased Services

564 Tuition To Career and Technology Centers

Total Other Purchased Services

Total 1300 Vocational Education

Elementary

Secondary

Federal

Total

399,640.00

399,640.00

\$399,640.00

\$399,640.00

\$399,640.00

\$399,640.00

General Fund (10)

	<u>Elementary</u>	<u>Secondary</u>	<u>Federal</u>	<u>Total</u>
1400 Other Instructional Programs – Elementary / Secondary				
100 Personnel Services – Salaries				
100 Personnel Services – Salaries	2,326.65	1,865.83		4,192.48
Total Personnel Services – Salaries	\$2,326.65	\$1,865.83		\$4,192.48
200 Personnel Services – Employee Benefits				
220 Social Security Contributions	178.03	142.74		320.77
230 PSERS Retirement Contributions	797.82	639.79		1,437.61
Total Personnel Services – Employee Benefits	\$975.85	\$782.53		\$1,758.38
300 Purchased Professional and Technical Services				
330 Other Professional Services		3,358.00		3,358.00
Total Purchased Professional and Technical Services		\$3,358.00		\$3,358.00
500 Other Purchased Services				
561 Tuition To Other School Districts Within the State	11,409.84	9,335.33		20,745.17
563 Tuition To Nonpublic Schools		18,638.68		18,638.68
Total Other Purchased Services	\$11,409.84	\$27,974.01		\$39,383.85
Total 1400 Other Instructional Programs – Elementary / Secondary	\$14,712.34	\$33,980.37		\$48,692.71

LEA : 115218303 South Middleton SD

Printed 11/24/2020 12:40:57 PM

General Fund (10)

1410 Drivers' Education

Elementary

Secondary

Federal

Total

300 Purchased Professional and Technical Services

330 Other Professional Services

3,358.00

3,358.00

Total Purchased Professional and Technical Services

\$3,358.00

\$3,358.00

Total 1410 Drivers' Education

\$3,358.00

\$3,358.00

General Fund (10)

1420 Summer School

100 Personnel Services – Salaries

100 Personnel Services – Salaries

Total Personnel Services – Salaries

200 Personnel Services – Employee Benefits

220 Social Security Contributions

230 PSERS Retirement Contributions

Total Personnel Services – Employee Benefits

Total 1420 Summer School

	<u>Elementary</u>	<u>Secondary</u>	<u>Federal</u>	<u>Total</u>
		1,592.48		1,592.48
		\$1,592.48		\$1,592.48
		121.83		121.83
		546.06		546.06
		\$667.89		\$667.89
		\$2,260.37		\$2,260.37

General Fund (10)

1430 Homebound Instruction

100 Personnel Services – Salaries

	<u>Elementary</u>	<u>Secondary</u>	<u>Federal</u>	<u>Total</u>
100 Personnel Services – Salaries	2,326.65	273.35		2,600.00
Total Personnel Services – Salaries	\$2,326.65	\$273.35		\$2,600.00

200 Personnel Services – Employee Benefits

220 Social Security Contributions	178.03	20.91		198.94
230 PSERS Retirement Contributions	797.82	93.73		891.55

Total Personnel Services – Employee Benefits	\$975.85	\$114.64		\$1,090.49
Total 1430 Homebound Instruction	\$3,302.50	\$387.99		\$3,690.49

LEA : 115218303 South Middleton SD

Printed 11/24/2020 12:40:57 PM

General Fund (10)

1440 Alternative Regular Education Programs

500 Other Purchased Services

561 Tuition To Other School Districts Within the State

563 Tuition To Nonpublic Schools

Total Other Purchased Services

Total 1440 Alternative Regular Education Programs

Elementary

Secondary

Federal

Total

11,409.84

9,335.33

20,745.17

18,638.68

18,638.68

\$11,409.84

\$27,974.01

\$39,383.85

\$11,409.84

\$27,974.01

\$39,383.85

LEA : 115218303 South Middleton SD

Printed 11/24/2020 12:40:57 PM

General Fund (10)

1441 Adjudicated / Court-Placed Programs

500 Other Purchased Services

561 Tuition To Other School Districts Within the State

Total Other Purchased Services

Total 1441 Adjudicated / Court-Placed Programs

	<u>Elementary</u>	<u>Secondary</u>	<u>Federal</u>	<u>Total</u>
561 Tuition To Other School Districts Within the State	11,409.84	9,335.33		20,745.17
Total Other Purchased Services	\$11,409.84	\$9,335.33		\$20,745.17
Total 1441 Adjudicated / Court-Placed Programs	\$11,409.84	\$9,335.33		\$20,745.17

LEA : 115218303 South Middleton SD

Printed 11/24/2020 12:40:57 PM

General Fund (10)

1442 Alternative Education Programs

500 Other Purchased Services

563 Tuition To Nonpublic Schools

Total Other Purchased Services

Total 1442 Alternative Education Programs

Elementary

Secondary

Federal

Total

18,638.68

18,638.68

\$18,638.68

\$18,638.68

\$18,638.68

\$18,638.68

LEA : 115218303 South Middleton SD

Printed 11/24/2020 12:40:57 PM

General Fund (10)

1500 Nonpublic School Programs

Elementary

Secondary

Federal

Total

300 Purchased Professional and Technical Services

322 Professional Educational Services – lus

380.00

380.00

Total Purchased Professional and Technical Services

\$380.00

\$380.00

Total 1500 Nonpublic School Programs

\$380.00

\$380.00

General Fund (10)

1600 Adult Education Programs

Elementary

Secondary

Federal

Total

500 Other Purchased Services

566 Tuition To Institutions of Higher Education and Technical Institutes

99,151.00

Total Other Purchased Services

\$99,151.00

Total 1600 Adult Education Programs

\$99,151.00

General Fund (10)

2000 Support Services

Total

100 Personnel Services – Salaries

100 Personnel Services – Salaries 3,740,162.22

Total Personnel Services – Salaries

\$3,740,162.22

200 Personnel Services – Employee Benefits

210 Group Insurance – Contracted Provider 961,194.37

220 Social Security Contributions 272,884.73

230 PSERS Retirement Contributions 1,233,529.85

240 Tuition Reimbursement 162,829.19

250 Unemployment Compensation 5,615.33

270 Group Insurance – Self-Insurance 40,028.12

292 Health Savings Accounts 164,500.00

Total Personnel Services – Employee Benefits

\$2,840,581.59

300 Purchased Professional and Technical Services

310 Official / Administrative Services 129,757.62

322 Professional Educational Services – Ius 219,778.08

329 Professional Educational Services – Other 105,607.48

330 Other Professional Services 307,427.56

340 Technical Services 36,251.87

350 Security / Safety Services 550.00

360 Employee Training and Development Services 1,235.95

390 Other Purchased Professional and Technical Services 66,237.78

Total Purchased Professional and Technical Services

\$866,846.34

400 Purchased Property Services

410 Cleaning Services 678,508.96

420 Utility Services 43,288.63

430 Repairs and Maintenance Services 159,055.51

440 Rentals 179,505.30

460 Extermination Services 7,862.69

490 Other Purchased Property Services 2,370.00

Total Purchased Property Services

\$1,070,591.09

500 Other Purchased Services

510 Student Transportation Services 476.88

513 Contracted Carriers 1,549,354.84

516 Student Transportation Services From the IU 43,359.97

520 Insurance – General 3,360.00

521 Fire Insurance 79,244.00

522 Automotive Liability Insurance (307.00)

530 Communications 134,449.75

550 Printing and Binding 22,172.26

580 Travel 22,571.76

595 IU Payments By Withholding 31,823.77

Total Other Purchased Services

\$1,886,506.23

600 Supplies

610 General Supplies

General Fund (10)

2000 Support Services

Total

600 Supplies

620 Energy	414,525.15
630 Food	335.72
640 Books and Periodicals	57,887.11
650 Supplies & Fees – Technology Related	128,437.28

Total Supplies	\$1,214,634.66
-----------------------	-----------------------

700 Property

752 Capital Equipment – Original and Additional	18,847.33
756 Capitalized Technology Equipment – Original	22,544.55
758 Capitalized Technology Software - Original	71,234.34

Total Property	\$112,626.22
-----------------------	---------------------

800 Other Objects

810 Dues and Fees	46,626.59
820 Claims and Judgments Against the LEA	(662.02)
890 Miscellaneous Expenditures	23,372.16

Total Other Objects	\$69,336.73
----------------------------	--------------------

Total 2000 Support Services	\$11,801,285.08
------------------------------------	------------------------

General Fund (10)

	<u>Elementary</u>	<u>Secondary</u>	<u>Federal</u>	<u>Total</u>
2100 Support Services – Students				
100 Personnel Services – Salaries				
100 Personnel Services – Salaries	319,524.48	481,733.83		819,666.32
Total Personnel Services – Salaries	\$319,524.48	\$481,733.83		\$819,666.32
200 Personnel Services – Employee Benefits				
210 Group Insurance – Contracted Provider	84,836.39	154,022.68		240,649.97
220 Social Security Contributions	23,412.03	34,883.03		59,701.00
230 PSERS Retirement Contributions	113,342.44	160,507.57		278,864.38
270 Group Insurance – Self-Insurance	3,934.26	8,595.50		12,529.76
292 Health Savings Accounts	11,499.75	18,500.25		30,000.00
Total Personnel Services – Employee Benefits	\$237,024.87	\$376,509.03		\$621,745.11
300 Purchased Professional and Technical Services				
329 Professional Educational Services – Other	13,610.72		4,395.00	18,005.72
330 Other Professional Services	9,900.02	8,100.01		18,000.03
Total Purchased Professional and Technical Services	\$23,510.74	\$8,100.01	\$4,395.00	\$36,005.75
500 Other Purchased Services				
510 Student Transportation Services		476.88		476.88
580 Travel	862.33	817.38		1,679.71
Total Other Purchased Services	\$862.33	\$1,294.26		\$2,156.59
600 Supplies				
610 General Supplies	2,257.43	1,461.06		6,505.99
640 Books and Periodicals		2,200.00		2,200.00
650 Supplies & Fees – Technology Related				45,821.00
Total Supplies	\$2,257.43	\$3,661.06		\$54,526.99
800 Other Objects				
810 Dues and Fees	313.50	2,050.50		2,364.00
890 Miscellaneous Expenditures	495.00	405.00		900.00
Total Other Objects	\$808.50	\$2,455.50		\$3,264.00
Total 2100 Support Services – Students	\$583,988.35	\$873,753.69	\$4,395.00	\$1,537,364.76

General Fund (10)

2110 Supervision of Student Services	<u>Elementary</u>	<u>Secondary</u>	<u>Federal</u>	<u>Total</u>
100 Personnel Services – Salaries				
100 Personnel Services – Salaries	78,860.08	64,521.87		143,381.95
Total Personnel Services – Salaries	\$78,860.08	\$64,521.87		\$143,381.95
200 Personnel Services – Employee Benefits				
210 Group Insurance – Contracted Provider	19,207.01	15,714.82		34,921.83
220 Social Security Contributions	5,806.52	4,750.78		10,557.30
230 PSERS Retirement Contributions	27,041.17	22,124.59		49,165.76
270 Group Insurance – Self-Insurance	1,419.49	1,161.39		2,580.88
Total Personnel Services – Employee Benefits	\$53,474.19	\$43,751.58		\$97,225.77
300 Purchased Professional and Technical Services				
329 Professional Educational Services – Other	13,610.72			13,610.72
Total Purchased Professional and Technical Services	\$13,610.72			\$13,610.72
Total 2110 Supervision of Student Services	\$145,944.99	\$108,273.45		\$254,218.44

General Fund (10)

	<u>Elementary</u>	<u>Secondary</u>	<u>Federal</u>	<u>Total</u>
2111 Supervision of Student Services – Head of Component				
100 Personnel Services – Salaries				
100 Personnel Services – Salaries	53,533.65	43,800.25		97,333.90
Total Personnel Services – Salaries	\$53,533.65	\$43,800.25		\$97,333.90
200 Personnel Services – Employee Benefits				
210 Group Insurance – Contracted Provider	9,579.51	7,837.78		17,417.29
220 Social Security Contributions	3,932.13	3,217.19		7,149.32
230 PSERS Retirement Contributions	18,356.74	15,019.15		33,375.89
270 Group Insurance – Self-Insurance	277.06	226.68		503.74
Total Personnel Services – Employee Benefits	\$32,145.44	\$26,300.80		\$58,446.24
300 Purchased Professional and Technical Services				
329 Professional Educational Services – Other	13,610.72			13,610.72
Total Purchased Professional and Technical Services	\$13,610.72			\$13,610.72
Total 2111 Supervision of Student Services – Head of Component	\$99,289.81	\$70,101.05		\$169,390.86

General Fund (10)

2119 Supervision of Student Services – All Other Supervision

	<u>Elementary</u>	<u>Secondary</u>	<u>Federal</u>	<u>Total</u>
100 Personnel Services – Salaries				
100 Personnel Services – Salaries	25,326.43	20,721.62		46,048.05
Total Personnel Services – Salaries	\$25,326.43	\$20,721.62		\$46,048.05
200 Personnel Services – Employee Benefits				
210 Group Insurance – Contracted Provider	9,627.50	7,877.04		17,504.54
220 Social Security Contributions	1,874.39	1,533.59		3,407.98
230 PSERS Retirement Contributions	8,684.43	7,105.44		15,789.87
270 Group Insurance – Self-Insurance	1,142.43	934.71		2,077.14
Total Personnel Services – Employee Benefits	\$21,328.75	\$17,450.78		\$38,779.53
Total 2119 Supervision of Student Services – All Other Supervision	\$46,655.18	\$38,172.40		\$84,827.58

General Fund (10)

2120 Guidance Services

	<u>Elementary</u>	<u>Secondary</u>	<u>Federal</u>	<u>Total</u>
100 Personnel Services – Salaries				
100 Personnel Services – Salaries	153,991.61	355,836.64		509,828.25
Total Personnel Services – Salaries	\$153,991.61	\$355,836.64		\$509,828.25
200 Personnel Services – Employee Benefits				
210 Group Insurance – Contracted Provider	44,465.31	123,191.49		167,656.80
220 Social Security Contributions	11,178.06	25,592.47		36,770.53
230 PSERS Retirement Contributions	61,371.08	120,575.09		181,946.17
270 Group Insurance – Self-Insurance	1,168.65	7,084.01		8,252.66
292 Health Savings Accounts	7,999.80	16,000.20		24,000.00
Total Personnel Services – Employee Benefits	\$126,182.90	\$292,443.26		\$418,626.16
500 Other Purchased Services				
510 Student Transportation Services		476.88		476.88
580 Travel		111.83		111.83
Total Other Purchased Services		\$588.71		\$588.71
600 Supplies				
610 General Supplies	471.68			471.68
640 Books and Periodicals		2,200.00		2,200.00
Total Supplies	\$471.68	\$2,200.00		\$2,671.68
800 Other Objects				
810 Dues and Fees		1,794.00		1,794.00
Total Other Objects		\$1,794.00		\$1,794.00
Total 2120 Guidance Services	\$280,646.19	\$652,862.61		\$933,508.80

General Fund (10)

2130 Attendance Services

Elementary

Secondary

Federal

Total

100 Personnel Services – Salaries

100 Personnel Services – Salaries

18,408.01

Total Personnel Services – Salaries

\$18,408.01

200 Personnel Services – Employee Benefits

210 Group Insurance – Contracted Provider

1,790.90

220 Social Security Contributions

1,405.94

230 PSERS Retirement Contributions

5,014.37

Total Personnel Services – Employee Benefits

\$8,211.21

Total 2130 Attendance Services

\$26,619.22

General Fund (10)

2140 Psychological Services

	<u>Elementary</u>	<u>Secondary</u>	<u>Federal</u>	<u>Total</u>
100 Personnel Services – Salaries				
100 Personnel Services – Salaries	86,672.79	61,375.32		148,048.11
Total Personnel Services – Salaries	\$86,672.79	\$61,375.32		\$148,048.11
200 Personnel Services – Employee Benefits				
210 Group Insurance – Contracted Provider	21,164.07	15,116.37		36,280.44
220 Social Security Contributions	6,427.45	4,539.78		10,967.23
230 PSERS Retirement Contributions	24,930.19	17,807.89		42,738.08
270 Group Insurance – Self-Insurance	1,346.12	350.10		1,696.22
292 Health Savings Accounts	3,499.95	2,500.05		6,000.00
Total Personnel Services – Employee Benefits	\$57,367.78	\$40,314.19		\$97,681.97
300 Purchased Professional and Technical Services				
330 Other Professional Services	9,900.02	8,100.01		18,000.03
Total Purchased Professional and Technical Services	\$9,900.02	\$8,100.01		\$18,000.03
500 Other Purchased Services				
580 Travel	862.33	705.55		1,567.88
Total Other Purchased Services	\$862.33	\$705.55		\$1,567.88
600 Supplies				
610 General Supplies	1,785.75	1,461.06		3,246.81
Total Supplies	\$1,785.75	\$1,461.06		\$3,246.81
800 Other Objects				
810 Dues and Fees	313.50	256.50		570.00
890 Miscellaneous Expenditures	495.00	405.00		900.00
Total Other Objects	\$808.50	\$661.50		\$1,470.00
Total 2140 Psychological Services	\$157,397.17	\$112,617.63		\$270,014.80

General Fund (10)

2160 Social Work Services

Elementary

Secondary

Federal

Total

300 Purchased Professional and Technical Services

329 Professional Educational Services – Other

4,395.00

4,395.00

Total Purchased Professional and Technical Services

\$4,395.00

\$4,395.00

Total 2160 Social Work Services

\$4,395.00

\$4,395.00

LEA : 115218303 South Middleton SD

Printed 11/24/2020 12:41:20 PM

General Fund (10)

2170 Student Accounting Services

	<u>Elementary</u>	<u>Secondary</u>	<u>Federal</u>	<u>Total</u>
600 <u>Supplies</u>				
610 General Supplies				2,787.50
650 Supplies & Fees – Technology Related				45,821.00
Total Supplies				\$48,608.50
Total 2170 Student Accounting Services				\$48,608.50

General Fund (10)

2200 Support Services – Instructional Staff

	<u>Elementary</u>	<u>Secondary</u>	<u>Federal</u>	<u>Total</u>
100 Personnel Services – Salaries				
100 Personnel Services – Salaries	378,601.80	290,794.56		669,396.36
Total Personnel Services – Salaries	\$378,601.80	\$290,794.56		\$669,396.36
200 Personnel Services – Employee Benefits				
210 Group Insurance – Contracted Provider	85,167.31	71,636.25		156,803.56
220 Social Security Contributions	27,790.82	20,960.76		48,751.58
230 PSERS Retirement Contributions	122,408.77	95,721.09		218,129.86
240 Tuition Reimbursement	84,101.04	49,609.15		133,710.19
270 Group Insurance – Self-Insurance	2,775.30	2,443.48		5,218.78
292 Health Savings Accounts	13,474.90	11,525.10		25,000.00
Total Personnel Services – Employee Benefits	\$335,718.14	\$251,895.83		\$587,613.97
300 Purchased Professional and Technical Services				
322 Professional Educational Services – Ius	119,890.10	98,091.90	1,764.08	219,746.08
329 Professional Educational Services – Other	29,623.04	28,393.39	700.00	58,716.43
340 Technical Services	2,153.75	1,440.00		3,593.75
360 Employee Training and Development Services	679.77	556.18		1,235.95
Total Purchased Professional and Technical Services	\$152,346.66	\$128,481.47	\$2,464.08	\$283,292.21
400 Purchased Property Services				
430 Repairs and Maintenance Services	5,932.14	4,853.57		10,785.71
440 Rentals	21,592.17	33,813.62		55,405.79
Total Purchased Property Services	\$27,524.31	\$38,667.19		\$66,191.50
500 Other Purchased Services				
530 Communications	35,712.52	29,219.33		64,931.85
580 Travel	8,461.92	6,940.70		15,402.62
Total Other Purchased Services	\$44,174.44	\$36,160.03		\$80,334.47
600 Supplies				
610 General Supplies	138,047.00	129,201.45		267,248.45
640 Books and Periodicals	38,571.99	14,612.52		53,184.51
650 Supplies & Fees – Technology Related	(1,741.06)	(1,725.52)		(3,466.58)
Total Supplies	\$174,877.93	\$142,088.45		\$316,966.38
700 Property				
752 Capital Equipment – Original and Additional		10,196.48		10,196.48
758 Capitalized Technology Software - Original	39,178.89	32,055.45		71,234.34
Total Property	\$39,178.89	\$42,251.93		\$81,430.82
800 Other Objects				
810 Dues and Fees	457.55	333.45		791.00
890 Miscellaneous Expenditures	6,032.05	6,951.53		12,983.58
Total Other Objects	\$6,489.60	\$7,284.98		\$13,774.58
Total 2200 Support Services – Instructional Staff	\$1,158,911.77	\$937,624.44	\$2,464.08	\$2,099,000.29

General Fund (10)

2210 Supervision of Educational Media Services

600 Supplies

610 General Supplies

Total Supplies

Total 2210 Supervision of Educational Media Services

	<u>Elementary</u>	<u>Secondary</u>	<u>Federal</u>	<u>Total</u>
610 General Supplies	382.25	312.75		695.00
Total Supplies	\$382.25	\$312.75		\$695.00
Total 2210 Supervision of Educational Media Services	\$382.25	\$312.75		\$695.00

General Fund (10)

2211 Supervision of Educational Media Services – Head of Component

	<u>Elementary</u>	<u>Secondary</u>	<u>Federal</u>	<u>Total</u>
600 <u>Supplies</u>				
610 General Supplies	382.25	312.75		695.00
Total Supplies	\$382.25	\$312.75		\$695.00
Total 2211 Supervision of Educational Media Services – Head of Component	\$382.25	\$312.75		\$695.00

General Fund (10)

2220 Technology Support Services

	<u>Elementary</u>	<u>Secondary</u>	<u>Federal</u>	<u>Total</u>
100 Personnel Services – Salaries				
100 Personnel Services – Salaries	45,904.82	37,558.51		83,463.33
Total Personnel Services – Salaries	\$45,904.82	\$37,558.51		\$83,463.33
200 Personnel Services – Employee Benefits				
210 Group Insurance – Contracted Provider	13,000.02	10,636.38		23,636.40
220 Social Security Contributions	3,428.84	2,805.41		6,234.25
230 PSERS Retirement Contributions	14,929.55	12,215.09		27,144.64
270 Group Insurance – Self-Insurance	1,230.69	1,006.93		2,237.62
292 Health Savings Accounts	4,125.00	3,375.00		7,500.00
Total Personnel Services – Employee Benefits	\$36,714.10	\$30,038.81		\$66,752.91
300 Purchased Professional and Technical Services				
322 Professional Educational Services – lus	119,443.50	97,726.50		217,170.00
Total Purchased Professional and Technical Services	\$119,443.50	\$97,726.50		\$217,170.00
400 Purchased Property Services				
430 Repairs and Maintenance Services	82.50	67.50		150.00
440 Rentals	7,932.54	6,490.26		14,422.80
Total Purchased Property Services	\$8,015.04	\$6,557.76		\$14,572.80
600 Supplies				
610 General Supplies	837.97	16,973.18		17,811.15
Total Supplies	\$837.97	\$16,973.18		\$17,811.15
700 Property				
758 Capitalized Technology Software - Original	39,178.89	32,055.45		71,234.34
Total Property	\$39,178.89	\$32,055.45		\$71,234.34
Total 2220 Technology Support Services	\$250,094.32	\$220,910.21		\$471,004.53

General Fund (10)

	<u>Elementary</u>	<u>Secondary</u>	<u>Federal</u>	<u>Total</u>
2240 Computer-Assisted Instruction Support Services				
100 Personnel Services – Salaries				
100 Personnel Services – Salaries	36,199.14	29,617.46		65,816.60
Total Personnel Services – Salaries	\$36,199.14	\$29,617.46		\$65,816.60
200 Personnel Services – Employee Benefits				
210 Group Insurance – Contracted Provider	12,244.40	10,018.15		22,262.55
220 Social Security Contributions	2,555.50	2,090.86		4,646.36
230 PSERS Retirement Contributions	9,388.02	7,681.10		17,069.12
Total Personnel Services – Employee Benefits	\$24,187.92	\$19,790.11		\$43,978.03
300 Purchased Professional and Technical Services				
340 Technical Services	2,153.75	1,440.00		3,593.75
Total Purchased Professional and Technical Services	\$2,153.75	\$1,440.00		\$3,593.75
400 Purchased Property Services				
430 Repairs and Maintenance Services	5,849.64	4,786.07		10,635.71
440 Rentals	13,659.63	27,323.36		40,982.99
Total Purchased Property Services	\$19,509.27	\$32,109.43		\$51,618.70
500 Other Purchased Services				
530 Communications	35,712.52	29,219.33		64,931.85
580 Travel	3,089.12	2,527.46		5,616.58
Total Other Purchased Services	\$38,801.64	\$31,746.79		\$70,548.43
600 Supplies				
610 General Supplies	131,863.82	107,481.13		239,344.95
640 Books and Periodicals	19.08			19.08
650 Supplies & Fees – Technology Related	(11,250.14)	(9,204.66)		(20,454.80)
Total Supplies	\$120,632.76	\$98,276.47		\$218,909.23
Total 2240 Computer-Assisted Instruction Support Services	\$241,484.48	\$212,980.26		\$454,464.74

General Fund (10)

	<u>Elementary</u>	<u>Secondary</u>	<u>Federal</u>	<u>Total</u>
2250 School Library Services				
100 Personnel Services – Salaries				
100 Personnel Services – Salaries	164,848.13	115,772.42		280,620.55
Total Personnel Services – Salaries	\$164,848.13	\$115,772.42		\$280,620.55
200 Personnel Services – Employee Benefits				
210 Group Insurance – Contracted Provider	27,101.83	24,128.13		51,229.96
220 Social Security Contributions	12,090.84	8,105.18		20,196.02
230 PSERS Retirement Contributions	55,540.33	40,965.02		96,505.35
270 Group Insurance – Self-Insurance	559.73	630.74		1,190.47
292 Health Savings Accounts	5,499.90	5,000.10		10,500.00
Total Personnel Services – Employee Benefits	\$100,792.63	\$78,829.17		\$179,621.80
300 Purchased Professional and Technical Services				
329 Professional Educational Services – Other	4,039.20	7,461.16		11,500.36
Total Purchased Professional and Technical Services	\$4,039.20	\$7,461.16		\$11,500.36
600 Supplies				
610 General Supplies	861.67	3,343.40		4,205.07
640 Books and Periodicals	10,726.74	13,668.14		24,394.88
650 Supplies & Fees – Technology Related	2,897.96	2,070.04		4,968.00
Total Supplies	\$14,486.37	\$19,081.58		\$33,567.95
700 Property				
752 Capital Equipment – Original and Additional		10,196.48		10,196.48
Total Property		\$10,196.48		\$10,196.48
Total 2250 School Library Services	\$284,166.33	\$231,340.81		\$515,507.14

General Fund (10)

2260 Instruction and Curriculum Development Services

	<u>Elementary</u>	<u>Secondary</u>	<u>Federal</u>	<u>Total</u>
100 Personnel Services – Salaries				
100 Personnel Services – Salaries	123,366.86	100,936.52		224,303.38
Total Personnel Services – Salaries	\$123,366.86	\$100,936.52		\$224,303.38
200 Personnel Services – Employee Benefits				
210 Group Insurance – Contracted Provider	32,821.06	26,853.59		59,674.65
220 Social Security Contributions	9,081.96	7,430.69		16,512.65
230 PSERS Retirement Contributions	39,710.65	32,490.53		72,201.18
270 Group Insurance – Self-Insurance	984.88	805.81		1,790.69
292 Health Savings Accounts	3,850.00	3,150.00		7,000.00
Total Personnel Services – Employee Benefits	\$86,448.55	\$70,730.62		\$157,179.17
300 Purchased Professional and Technical Services				
329 Professional Educational Services – Other	25,583.84	20,932.23	700.00	47,216.07
Total Purchased Professional and Technical Services	\$25,583.84	\$20,932.23	\$700.00	\$47,216.07
500 Other Purchased Services				
580 Travel	1,434.24	1,173.47		2,607.71
Total Other Purchased Services	\$1,434.24	\$1,173.47		\$2,607.71
600 Supplies				
610 General Supplies	3,367.31	490.47		3,857.78
640 Books and Periodicals	26,891.53	179.68		27,071.21
650 Supplies & Fees – Technology Related	6,611.12	5,409.10		12,020.22
Total Supplies	\$36,869.96	\$6,079.25		\$42,949.21
800 Other Objects				
810 Dues and Fees	282.65	190.35		473.00
890 Miscellaneous Expenditures	173.80	142.20		316.00
Total Other Objects	\$456.45	\$332.55		\$789.00
Total 2260 Instruction and Curriculum Development Services	\$274,159.90	\$200,184.64	\$700.00	\$475,044.54

General Fund (10)

2270 Instructional Staff Professional Development Services

	<u>Elementary</u>	<u>Secondary</u>	<u>Federal</u>	<u>Total</u>
100 Personnel Services – Salaries				
100 Personnel Services – Salaries	8,282.85	6,909.65		15,192.50
Total Personnel Services – Salaries	\$8,282.85	\$6,909.65		\$15,192.50
200 Personnel Services – Employee Benefits				
220 Social Security Contributions	633.68	528.62		1,162.30
230 PSERS Retirement Contributions	2,840.22	2,369.35		5,209.57
240 Tuition Reimbursement	84,101.04	49,609.15		133,710.19
Total Personnel Services – Employee Benefits	\$87,574.94	\$52,507.12		\$140,082.06
300 Purchased Professional and Technical Services				
322 Professional Educational Services – lus	446.60	365.40		812.00
360 Employee Training and Development Services	679.77	556.18		1,235.95
Total Purchased Professional and Technical Services	\$1,126.37	\$921.58		\$2,047.95
500 Other Purchased Services				
580 Travel	3,938.56	3,239.77		7,178.33
Total Other Purchased Services	\$3,938.56	\$3,239.77		\$7,178.33
600 Supplies				
610 General Supplies	733.98	600.52		1,334.50
640 Books and Periodicals	934.64	764.70		1,699.34
Total Supplies	\$1,668.62	\$1,365.22		\$3,033.84
800 Other Objects				
810 Dues and Fees	174.90	143.10		318.00
890 Miscellaneous Expenditures	5,858.25	6,809.33		12,667.58
Total Other Objects	\$6,033.15	\$6,952.43		\$12,985.58
Total 2270 Instructional Staff Professional Development Services	\$108,624.49	\$71,895.77		\$180,520.26

General Fund (10)

2280 Nonpublic Support Services

300 Purchased Professional and Technical Services

322 Professional Educational Services – lus

Total Purchased Professional and Technical Services

Total 2280 Nonpublic Support Services

Elementary

Secondary

Federal

Total

1,764.08

1,764.08

\$1,764.08

\$1,764.08

\$1,764.08

\$1,764.08

General Fund (10)

	<u>Elementary</u>	<u>Secondary</u>	<u>Federal</u>	<u>Total</u>
2300 Support Services – Administration				
100 Personnel Services – Salaries				
100 Personnel Services – Salaries	403,140.10	474,924.75		1,184,981.82
Total Personnel Services – Salaries	\$403,140.10	\$474,924.75		\$1,184,981.82
200 Personnel Services – Employee Benefits				
210 Group Insurance – Contracted Provider	100,242.09	112,347.79		271,936.59
220 Social Security Contributions	29,876.41	35,094.59		87,057.05
230 PSERS Retirement Contributions	137,494.00	163,431.17		395,664.95
270 Group Insurance – Self-Insurance	4,651.06	3,491.30		10,258.08
292 Health Savings Accounts	15,999.60	11,000.40		51,500.00
Total Personnel Services – Employee Benefits	\$288,263.16	\$325,365.25		\$816,416.67
300 Purchased Professional and Technical Services				
310 Official / Administrative Services				129,757.62
330 Other Professional Services				134,724.25
Total Purchased Professional and Technical Services				\$264,481.87
400 Purchased Property Services				
440 Rentals	48,921.88	60,705.67		109,627.55
Total Purchased Property Services	\$48,921.88	\$60,705.67		\$109,627.55
500 Other Purchased Services				
520 Insurance – General				3,360.00
530 Communications				16,659.55
550 Printing and Binding				17,632.26
580 Travel	388.61	2,713.94		4,001.45
Total Other Purchased Services	\$388.61	\$2,713.94		\$41,653.26
600 Supplies				
610 General Supplies	6,246.01	24,109.43		39,631.99
630 Food				335.72
640 Books and Periodicals	164.98	330.02		2,502.60
650 Supplies & Fees – Technology Related				3,400.00
Total Supplies	\$6,410.99	\$24,439.45		\$45,870.31
800 Other Objects				
810 Dues and Fees	1,803.61	2,868.39		35,973.53
820 Claims and Judgments Against the LEA				(662.02)
890 Miscellaneous Expenditures				909.83
Total Other Objects	\$1,803.61	\$2,868.39		\$36,221.34
Total 2300 Support Services – Administration	\$748,928.35	\$891,017.45		\$2,499,252.82

General Fund (10)

2310 Board Services

Elementary

Secondary

Federal

Total

300 Purchased Professional and Technical Services

330 Other Professional Services

38,350.00

Total Purchased Professional and Technical Services

\$38,350.00

500 Other Purchased Services

520 Insurance – General

490.00

550 Printing and Binding

17,632.26

Total Other Purchased Services

\$18,122.26

600 Supplies

610 General Supplies

1,178.94

630 Food

335.72

640 Books and Periodicals

1,141.10

650 Supplies & Fees – Technology Related

3,400.00

Total Supplies

\$6,055.76

800 Other Objects

810 Dues and Fees

14,853.49

820 Claims and Judgments Against the LEA

(662.02)

Total Other Objects

\$14,191.47

Total 2310 Board Services

\$76,719.49

General Fund (10)

	<u>Elementary</u>	<u>Secondary</u>	<u>Federal</u>	<u>Total</u>
2330 Tax Assessment and Collection Services				
100 Personnel Services – Salaries				
100 Personnel Services – Salaries				27,999.92
Total Personnel Services – Salaries				\$27,999.92
200 Personnel Services – Employee Benefits				
220 Social Security Contributions				2,142.14
Total Personnel Services – Employee Benefits				\$2,142.14
300 Purchased Professional and Technical Services				
310 Official / Administrative Services				129,757.62
Total Purchased Professional and Technical Services				\$129,757.62
500 Other Purchased Services				
520 Insurance – General				2,870.00
530 Communications				5,050.67
Total Other Purchased Services				\$7,920.67
600 Supplies				
610 General Supplies				4,046.90
Total Supplies				\$4,046.90
Total 2330 Tax Assessment and Collection Services				\$171,867.25

General Fund (10)

2340 Staff Relations and Negotiations Services

Elementary

Secondary

Federal

Total

100 Personnel Services – Salaries

100 Personnel Services – Salaries

48,314.34

Total Personnel Services – Salaries

\$48,314.34

200 Personnel Services – Employee Benefits

210 Group Insurance – Contracted Provider

11,608.47

220 Social Security Contributions

3,578.87

230 PSERS Retirement Contributions

16,567.05

270 Group Insurance – Self-Insurance

597.06

292 Health Savings Accounts

3,000.00

Total Personnel Services – Employee Benefits

\$35,351.45

Total 2340 Staff Relations and Negotiations Services

\$83,665.79

General Fund (10)

2350 Legal and Accounting Services

Elementary

Secondary

Federal

Total

300 Purchased Professional and Technical Services

330 Other Professional Services

96,374.25

Total Purchased Professional and Technical Services

\$96,374.25

Total 2350 Legal and Accounting Services

\$96,374.25

General Fund (10)

2360 Office of the Superintendent / Executive Director Services

Elementary Secondary Federal Total

100	<u>Personnel Services – Salaries</u>				
	100 Personnel Services – Salaries				213,524.61
Total Personnel Services – Salaries					\$213,524.61
200	<u>Personnel Services – Employee Benefits</u>				
	210 Group Insurance – Contracted Provider				37,261.32
	220 Social Security Contributions				15,177.66
	230 PSERS Retirement Contributions				73,217.67
	270 Group Insurance – Self-Insurance				1,518.66
	292 Health Savings Accounts				14,000.00
Total Personnel Services – Employee Benefits					\$141,175.31
500	<u>Other Purchased Services</u>				
	580 Travel				898.90
Total Other Purchased Services					\$898.90
600	<u>Supplies</u>				
	610 General Supplies				4,050.71
	640 Books and Periodicals				866.50
Total Supplies					\$4,917.21
800	<u>Other Objects</u>				
	810 Dues and Fees				16,448.04
	890 Miscellaneous Expenditures				909.83
Total Other Objects					\$17,357.87
Total 2360 Office of the Superintendent / Executive Director Services					\$377,873.90

General Fund (10)

2380 Office of the Principal Services

	<u>Elementary</u>	<u>Secondary</u>	<u>Federal</u>	<u>Total</u>
100 Personnel Services – Salaries				
100 Personnel Services – Salaries	403,140.10	474,924.75		878,064.85
Total Personnel Services – Salaries	\$403,140.10	\$474,924.75		\$878,064.85
200 Personnel Services – Employee Benefits				
210 Group Insurance – Contracted Provider	100,242.09	112,347.79		212,589.88
220 Social Security Contributions	29,876.41	35,094.59		64,971.00
230 PSERS Retirement Contributions	137,494.00	163,431.17		300,925.17
270 Group Insurance – Self-Insurance	4,651.06	3,491.30		8,142.36
292 Health Savings Accounts	15,999.60	11,000.40		27,000.00
Total Personnel Services – Employee Benefits	\$288,263.16	\$325,365.25		\$613,628.41
400 Purchased Property Services				
440 Rentals	48,921.88	60,705.67		109,627.55
Total Purchased Property Services	\$48,921.88	\$60,705.67		\$109,627.55
500 Other Purchased Services				
580 Travel	388.61	2,713.94		3,102.55
Total Other Purchased Services	\$388.61	\$2,713.94		\$3,102.55
600 Supplies				
610 General Supplies	6,246.01	24,109.43		30,355.44
640 Books and Periodicals	164.98	330.02		495.00
Total Supplies	\$6,410.99	\$24,439.45		\$30,850.44
800 Other Objects				
810 Dues and Fees	1,803.61	2,868.39		4,672.00
Total Other Objects	\$1,803.61	\$2,868.39		\$4,672.00
Total 2380 Office of the Principal Services	\$748,928.35	\$891,017.45		\$1,639,945.80

General Fund (10)

	<u>Elementary</u>	<u>Secondary</u>	<u>Federal</u>	<u>Total</u>
2390 Other Administration Services				
100 Personnel Services – Salaries				
100 Personnel Services – Salaries				17,078.10
Total Personnel Services – Salaries				\$17,078.10
200 Personnel Services – Employee Benefits				
210 Group Insurance – Contracted Provider				10,476.92
220 Social Security Contributions				1,187.38
230 PSERS Retirement Contributions				4,955.06
292 Health Savings Accounts				7,500.00
Total Personnel Services – Employee Benefits				\$24,119.36
500 Other Purchased Services				
530 Communications				11,608.88
Total Other Purchased Services				\$11,608.88
Total 2390 Other Administration Services				\$52,806.34

General Fund (10)

	<u>Elementary</u>	<u>Secondary</u>	<u>Federal</u>	<u>Total</u>
2400 Support Services – Pupil Health				
100 Personnel Services – Salaries				
100 Personnel Services – Salaries				187,728.11
Total Personnel Services – Salaries				\$187,728.11
200 Personnel Services – Employee Benefits				
210 Group Insurance – Contracted Provider				69,374.47
220 Social Security Contributions				12,852.17
230 PSERS Retirement Contributions				63,199.61
250 Unemployment Compensation				186.72
270 Group Insurance – Self-Insurance				5,117.20
292 Health Savings Accounts				13,000.00
Total Personnel Services – Employee Benefits				\$163,730.17
300 Purchased Professional and Technical Services				
322 Professional Educational Services – Ius				32.00
329 Professional Educational Services – Other				28,885.33
330 Other Professional Services				130,276.28
Total Purchased Professional and Technical Services				\$159,193.61
400 Purchased Property Services				
430 Repairs and Maintenance Services				65.00
Total Purchased Property Services				\$65.00
500 Other Purchased Services				
530 Communications				2,739.80
580 Travel				210.53
Total Other Purchased Services				\$2,950.33
600 Supplies				
610 General Supplies				6,518.43
650 Supplies & Fees – Technology Related				84.75
Total Supplies				\$6,603.18
800 Other Objects				
810 Dues and Fees				279.00
890 Miscellaneous Expenditures				279.00
Total Other Objects				\$558.00
Total 2400 Support Services – Pupil Health				\$520,828.40

LEA : 115218303 South Middleton SD

Printed 11/24/2020 12:41:20 PM

General Fund (10)

2420 Medical Services

Elementary

Secondary

Federal

Total

300 Purchased Professional and Technical Services

330 Other Professional Services

129,336.18

Total Purchased Professional and Technical Services

\$129,336.18

400 Purchased Property Services

430 Repairs and Maintenance Services

65.00

Total Purchased Property Services

\$65.00

Total 2420 Medical Services

\$129,401.18

General Fund (10)

2430 Dental Services

Elementary

Secondary

Federal

Total

300 Purchased Professional and Technical Services

330 Other Professional Services

280.00

Total Purchased Professional and Technical Services

\$280.00

Total 2430 Dental Services

\$280.00

General Fund (10)

2440 Nursing Services

	<u>Elementary</u>	<u>Secondary</u>	<u>Federal</u>	<u>Total</u>
100 Personnel Services – Salaries				
100 Personnel Services – Salaries				187,728.11
Total Personnel Services – Salaries				\$187,728.11
200 Personnel Services – Employee Benefits				
210 Group Insurance – Contracted Provider				69,374.47
220 Social Security Contributions				12,852.17
230 PSERS Retirement Contributions				63,199.61
250 Unemployment Compensation				186.72
270 Group Insurance – Self-Insurance				5,117.20
292 Health Savings Accounts				13,000.00
Total Personnel Services – Employee Benefits				\$163,730.17
300 Purchased Professional and Technical Services				
322 Professional Educational Services – Ius				32.00
329 Professional Educational Services – Other				28,885.33
330 Other Professional Services				660.10
Total Purchased Professional and Technical Services				\$29,577.43
500 Other Purchased Services				
530 Communications				2,739.80
580 Travel				210.53
Total Other Purchased Services				\$2,950.33
600 Supplies				
610 General Supplies				6,518.43
650 Supplies & Fees – Technology Related				84.75
Total Supplies				\$6,603.18
800 Other Objects				
810 Dues and Fees				279.00
890 Miscellaneous Expenditures				279.00
Total Other Objects				\$558.00
Total 2440 Nursing Services				\$391,147.22

General Fund (10)

2500 Support Services – Business

Elementary Secondary Federal Total

100 Personnel Services – Salaries

100 Personnel Services – Salaries 278,511.17

Total Personnel Services – Salaries \$278,511.17

200 Personnel Services – Employee Benefits

210 Group Insurance – Contracted Provider 56,579.84

220 Social Security Contributions 20,424.10

230 PSERS Retirement Contributions 93,741.26

260 Workers' Compensation 11.00

270 Group Insurance – Self-Insurance 3,215.86

292 Health Savings Accounts 12,000.00

Total Personnel Services – Employee Benefits \$185,972.06

300 Purchased Professional and Technical Services

330 Other Professional Services 24,427.00

340 Technical Services 30,458.12

Total Purchased Professional and Technical Services \$54,885.12

400 Purchased Property Services

440 Rentals 12,111.27

Total Purchased Property Services \$12,111.27

500 Other Purchased Services

530 Communications 11,928.57

550 Printing and Binding 4,540.00

580 Travel 1,274.65

Total Other Purchased Services \$17,743.22

600 Supplies

610 General Supplies 13,973.44

650 Supplies & Fees – Technology Related 82,538.11

Total Supplies \$96,511.55

800 Other Objects

810 Dues and Fees 5,474.86

890 Miscellaneous Expenditures 7,950.75

Total Other Objects \$13,425.61

Total 2500 Support Services – Business \$659,160.00

General Fund (10)

2510 Fiscal Services

Elementary Secondary Federal Total

100	<u>Personnel Services – Salaries</u>				
	100 Personnel Services – Salaries				278,511.17
Total Personnel Services – Salaries					\$278,511.17
200	<u>Personnel Services – Employee Benefits</u>				
	210 Group Insurance – Contracted Provider				56,579.84
	220 Social Security Contributions				20,424.10
	230 PSERS Retirement Contributions				93,741.26
	260 Workers' Compensation				11.00
	270 Group Insurance – Self-Insurance				3,215.86
	292 Health Savings Accounts				12,000.00
Total Personnel Services – Employee Benefits					\$185,972.06
300	<u>Purchased Professional and Technical Services</u>				
	330 Other Professional Services				24,427.00
	340 Technical Services				30,458.12
Total Purchased Professional and Technical Services					\$54,885.12
400	<u>Purchased Property Services</u>				
	440 Rentals				12,111.27
Total Purchased Property Services					\$12,111.27
500	<u>Other Purchased Services</u>				
	530 Communications				11,928.57
	580 Travel				1,274.65
Total Other Purchased Services					\$13,203.22
600	<u>Supplies</u>				
	610 General Supplies				13,973.44
	650 Supplies & Fees – Technology Related				82,538.11
Total Supplies					\$96,511.55
800	<u>Other Objects</u>				
	810 Dues and Fees				5,474.86
	890 Miscellaneous Expenditures				7,950.75
Total Other Objects					\$13,425.61
Total 2510 Fiscal Services					\$654,620.00

General Fund (10)

2511 Supervision of Fiscal Services - Head of Component

Elementary

Secondary

Federal

Total

100 Personnel Services – Salaries

100 Personnel Services – Salaries

94,745.50

Total Personnel Services – Salaries

\$94,745.50

200 Personnel Services – Employee Benefits

210 Group Insurance – Contracted Provider

15,601.56

220 Social Security Contributions

6,935.42

230 PSERS Retirement Contributions

31,663.31

270 Group Insurance – Self-Insurance

468.64

292 Health Savings Accounts

3,000.00

Total Personnel Services – Employee Benefits

\$57,668.93

Total 2511 Supervision of Fiscal Services - Head of Component

\$152,414.43

General Fund (10)

2513 Receiving and Disbursing Funds Services

Elementary

Secondary

Federal

Total

100 Personnel Services – Salaries

100 Personnel Services – Salaries

65,613.08

Total Personnel Services – Salaries

\$65,613.08

200 Personnel Services – Employee Benefits

210 Group Insurance – Contracted Provider

11,501.96

220 Social Security Contributions

4,836.46

230 PSERS Retirement Contributions

22,170.19

270 Group Insurance – Self-Insurance

2,064.70

292 Health Savings Accounts

3,000.00

Total Personnel Services – Employee Benefits

\$43,573.31

Total 2513 Receiving and Disbursing Funds Services

\$109,186.39

LEA : 115218303 South Middleton SD

Printed 11/24/2020 12:41:20 PM

General Fund (10)

2514 Payroll Services

100 Personnel Services – Salaries

	<u>Elementary</u>	<u>Secondary</u>	<u>Federal</u>	<u>Total</u>
100 Personnel Services – Salaries				62,166.22
Total Personnel Services – Salaries				\$62,166.22

200 Personnel Services – Employee Benefits

210 Group Insurance – Contracted Provider				16,137.12
220 Social Security Contributions				4,470.27
230 PSERS Retirement Contributions				21,316.76
270 Group Insurance – Self-Insurance				519.22
292 Health Savings Accounts				3,000.00

Total Personnel Services – Employee Benefits				\$45,443.37
---	--	--	--	--------------------

Total 2514 Payroll Services				\$107,609.59
------------------------------------	--	--	--	---------------------

General Fund (10)

2515 Financial Accounting Services

Elementary

Secondary

Federal

Total

100 Personnel Services – Salaries

100 Personnel Services – Salaries

38,930.10

Total Personnel Services – Salaries

\$38,930.10

200 Personnel Services – Employee Benefits

210 Group Insurance – Contracted Provider

13,339.20

220 Social Security Contributions

2,877.16

230 PSERS Retirement Contributions

12,742.38

270 Group Insurance – Self-Insurance

163.30

292 Health Savings Accounts

3,000.00

Total Personnel Services – Employee Benefits

\$32,122.04

300 Purchased Professional and Technical Services

330 Other Professional Services

24,427.00

340 Technical Services

30,458.12

Total Purchased Professional and Technical Services

\$54,885.12

400 Purchased Property Services

440 Rentals

12,111.27

Total Purchased Property Services

\$12,111.27

500 Other Purchased Services

530 Communications

11,928.57

580 Travel

1,274.65

Total Other Purchased Services

\$13,203.22

600 Supplies

610 General Supplies

13,973.44

650 Supplies & Fees – Technology Related

82,538.11

Total Supplies

\$96,511.55

800 Other Objects

810 Dues and Fees

5,474.86

890 Miscellaneous Expenditures

7,950.75

Total Other Objects

\$13,425.61

Total 2515 Financial Accounting Services

\$261,188.91

General Fund (10)

2516 Internal Auditing Services

Elementary

Secondary

Federal

Total

100 Personnel Services – Salaries

100 Personnel Services – Salaries

17,056.27

Total Personnel Services – Salaries

\$17,056.27

200 Personnel Services – Employee Benefits

220 Social Security Contributions

1,304.79

230 PSERS Retirement Contributions

5,848.62

260 Workers' Compensation

11.00

Total Personnel Services – Employee Benefits

\$7,164.41

Total 2516 Internal Auditing Services

\$24,220.68

LEA : 115218303 South Middleton SD

Printed 11/24/2020 12:41:20 PM

General Fund (10)

2540 Printing, Publishing and Duplicating Services

Elementary

Secondary

Federal

Total

500 Other Purchased Services

550 Printing and Binding

4,540.00

Total Other Purchased Services

\$4,540.00

Total 2540 Printing, Publishing and Duplicating Services

\$4,540.00

General Fund (10)

2600 Operation and Maintenance of Plant Services

Elementary Secondary Federal Total

100 Personnel Services – Salaries

100 Personnel Services – Salaries 540,167.35

Total Personnel Services – Salaries \$540,167.35

200 Personnel Services – Employee Benefits

210 Group Insurance – Contracted Provider 164,101.02

220 Social Security Contributions 39,533.07

230 PSERS Retirement Contributions 177,898.53

250 Unemployment Compensation 280.79

260 Workers' Compensation (11.00)

270 Group Insurance – Self-Insurance 3,688.44

292 Health Savings Accounts 30,000.00

Total Personnel Services – Employee Benefits \$415,490.85

300 Purchased Professional and Technical Services

350 Security / Safety Services 550.00

390 Other Purchased Professional and Technical Services 66,237.78

Total Purchased Professional and Technical Services \$66,787.78

400 Purchased Property Services

410 Cleaning Services 678,508.96

420 Utility Services 43,288.63

430 Repairs and Maintenance Services 148,204.80

440 Rentals 2,360.69

460 Extermination Services 7,862.69

490 Other Purchased Property Services 2,370.00

Total Purchased Property Services \$882,595.77

500 Other Purchased Services

521 Fire Insurance 79,244.00

522 Automotive Liability Insurance (307.00)

530 Communications 38,189.98

580 Travel 2.80

Total Other Purchased Services \$117,129.78

600 Supplies

610 General Supplies 142,780.87 130,480.23 273,261.10

620 Energy 414,525.15

Total Supplies \$142,780.87 \$130,480.23 \$687,786.25

700 Property

752 Capital Equipment – Original and Additional 8,650.85

756 Capitalized Technology Equipment – Original 22,544.55

Total Property \$31,195.40

800 Other Objects

810 Dues and Fees 1,744.20

890 Miscellaneous Expenditures 349.00

General Fund (10)

2600 Operation and Maintenance of Plant Services

Elementary

Secondary

Federal

Total

Total Other Objects

\$2,093.20

Total 2600 Operation and Maintenance of Plant Services

\$142,780.87

\$130,480.23

\$2,743,246.38

General Fund (10)

2610 Supervision of Operation and Maintenance of Plant Services	<u>Elementary</u>	<u>Secondary</u>	<u>Federal</u>	<u>Total</u>
100 Personnel Services – Salaries				
100 Personnel Services – Salaries				64,125.00
Total Personnel Services – Salaries				\$64,125.00
200 Personnel Services – Employee Benefits				
210 Group Insurance – Contracted Provider				7,224.36
220 Social Security Contributions				4,743.14
230 PSERS Retirement Contributions				21,988.43
270 Group Insurance – Self-Insurance				156.52
292 Health Savings Accounts				1,500.00
Total Personnel Services – Employee Benefits				\$35,612.45
Total 2610 Supervision of Operation and Maintenance of Plant Services				\$99,737.45

General Fund (10)

2611 Supervision of Operation and Maintenance of Plant Services – Head of Component

Elementary

Secondary

Federal

Total

100 Personnel Services – Salaries

100 Personnel Services – Salaries

64,125.00

Total Personnel Services – Salaries

\$64,125.00

200 Personnel Services – Employee Benefits

210 Group Insurance – Contracted Provider

7,224.36

220 Social Security Contributions

4,743.14

230 PSERS Retirement Contributions

21,988.43

270 Group Insurance – Self-Insurance

156.52

292 Health Savings Accounts

1,500.00

Total Personnel Services – Employee Benefits

\$35,612.45

Total 2611 Supervision of Operation and Maintenance of Plant Services – Head of Component

\$99,737.45

General Fund (10)

	<u>Elementary</u>	<u>Secondary</u>	<u>Federal</u>	<u>Total</u>
2620 Operation of Buildings Services				
100 Personnel Services – Salaries				
100 Personnel Services – Salaries				244,606.74
Total Personnel Services – Salaries				\$244,606.74
200 Personnel Services – Employee Benefits				
210 Group Insurance – Contracted Provider				88,570.42
220 Social Security Contributions				17,829.66
230 PSERS Retirement Contributions				79,706.99
250 Unemployment Compensation				280.79
260 Workers' Compensation				(110.00)
270 Group Insurance – Self-Insurance				1,972.63
292 Health Savings Accounts				16,500.00
Total Personnel Services – Employee Benefits				\$204,750.49
300 Purchased Professional and Technical Services				
390 Other Purchased Professional and Technical Services				66,237.78
Total Purchased Professional and Technical Services				\$66,237.78
400 Purchased Property Services				
410 Cleaning Services				678,508.96
420 Utility Services				43,288.63
430 Repairs and Maintenance Services				76,544.74
440 Rentals				2,360.69
460 Extermination Services				7,862.69
490 Other Purchased Property Services				2,370.00
Total Purchased Property Services				\$810,935.71
500 Other Purchased Services				
521 Fire Insurance				79,244.00
522 Automotive Liability Insurance				(307.00)
530 Communications				38,189.98
580 Travel				2.80
Total Other Purchased Services				\$117,129.78
600 Supplies				
610 General Supplies	87,911.52	85,587.11		173,498.63
620 Energy				409,145.79
Total Supplies	\$87,911.52	\$85,587.11		\$582,644.42
700 Property				
756 Capitalized Technology Equipment – Original				1,299.00
Total Property				\$1,299.00
800 Other Objects				
810 Dues and Fees				1,744.20
890 Miscellaneous Expenditures				349.00
Total Other Objects				\$2,093.20
Total 2620 Operation of Buildings Services	\$87,911.52	\$85,587.11		\$2,029,697.12

General Fund (10)

	<u>Elementary</u>	<u>Secondary</u>	<u>Federal</u>	<u>Total</u>
2630 Care and Upkeep of Grounds Services				
100 Personnel Services – Salaries				
100 Personnel Services – Salaries				18,161.25
Total Personnel Services – Salaries				\$18,161.25
200 Personnel Services – Employee Benefits				
220 Social Security Contributions				1,389.37
230 PSERS Retirement Contributions				3,328.42
260 Workers' Compensation				11.00
Total Personnel Services – Employee Benefits				\$4,728.79
600 Supplies				
610 General Supplies	22,658.49	18,538.77		41,197.26
Total Supplies	\$22,658.49	\$18,538.77		\$41,197.26
700 Property				
752 Capital Equipment – Original and Additional				8,650.85
Total Property				\$8,650.85
Total 2630 Care and Upkeep of Grounds Services	\$22,658.49	\$18,538.77		\$72,738.15

General Fund (10)

	<u>Elementary</u>	<u>Secondary</u>	<u>Federal</u>	<u>Total</u>
2640 Care and Upkeep of Equipment Services				
100 Personnel Services – Salaries				
100 Personnel Services – Salaries				213,274.36
Total Personnel Services – Salaries				\$213,274.36
200 Personnel Services – Employee Benefits				
210 Group Insurance – Contracted Provider				68,306.24
220 Social Security Contributions				15,570.90
230 PSERS Retirement Contributions				72,874.69
260 Workers' Compensation				88.00
270 Group Insurance – Self-Insurance				1,559.29
292 Health Savings Accounts				12,000.00
Total Personnel Services – Employee Benefits				\$170,399.12
400 Purchased Property Services				
430 Repairs and Maintenance Services				71,660.06
Total Purchased Property Services				\$71,660.06
600 Supplies				
610 General Supplies	27,786.54	22,734.45		50,520.99
Total Supplies	\$27,786.54	\$22,734.45		\$50,520.99
Total 2640 Care and Upkeep of Equipment Services	\$27,786.54	\$22,734.45		\$505,854.53

LEA : 115218303 South Middleton SD

Printed 11/24/2020 12:41:20 PM

General Fund (10)

	<u>Elementary</u>	<u>Secondary</u>	<u>Federal</u>	<u>Total</u>
2650 Vehicle Operation and Maintenance Services (Other Than Student Transportation Vehicles)				
600 Supplies				
610 General Supplies	2,334.13	1,909.74		4,243.87
620 Energy				5,379.36
Total Supplies	\$2,334.13	\$1,909.74		\$9,623.23
Total 2650 Vehicle Operation and Maintenance Services (Other Than Student Transportation Vehicles)	\$2,334.13	\$1,909.74		\$9,623.23

General Fund (10)

	<u>Elementary</u>	<u>Secondary</u>	<u>Federal</u>	<u>Total</u>
2660 Safety and Security Services				
300 <u>Purchased Professional and Technical Services</u>				
350 Security / Safety Services				550.00
Total Purchased Professional and Technical Services				\$550.00
600 <u>Supplies</u>				
610 General Supplies	2,090.19	1,710.16		3,800.35
Total Supplies	\$2,090.19	\$1,710.16		\$3,800.35
700 <u>Property</u>				
756 Capitalized Technology Equipment – Original				21,245.55
Total Property				\$21,245.55
Total 2660 Safety and Security Services	\$2,090.19	\$1,710.16		\$25,595.90

General Fund (10)

	<u>Elementary</u>	<u>Secondary</u>	<u>Federal</u>	<u>Total</u>
2700 Student Transportation Services				
100 Personnel Services – Salaries				
100 Personnel Services – Salaries				59,711.09
Total Personnel Services – Salaries				\$59,711.09
200 Personnel Services – Employee Benefits				
210 Group Insurance – Contracted Provider				1,748.92
220 Social Security Contributions				4,565.76
230 PSERS Retirement Contributions				6,031.26
250 Unemployment Compensation				5,147.82
292 Health Savings Accounts				3,000.00
Total Personnel Services – Employee Benefits				\$20,493.76
500 Other Purchased Services				
513 Contracted Carriers				1,549,354.84
516 Student Transportation Services From the IU				43,359.97
Total Other Purchased Services				\$1,592,714.81
600 Supplies				
610 General Supplies				6,310.00
650 Supplies & Fees – Technology Related				60.00
Total Supplies				\$6,370.00
Total 2700 Student Transportation Services				\$1,679,289.66

General Fund (10)

2710 Supervision of Student Transportation Services

Elementary

Secondary

Federal

Total

100 Personnel Services – Salaries

100 Personnel Services – Salaries

826.86

Total Personnel Services – Salaries

\$826.86

200 Personnel Services – Employee Benefits

210 Group Insurance – Contracted Provider

1,748.92

220 Social Security Contributions

60.97

230 PSERS Retirement Contributions

283.53

292 Health Savings Accounts

3,000.00

Total Personnel Services – Employee Benefits

\$5,093.42

Total 2710 Supervision of Student Transportation Services

\$5,920.28

General Fund (10)

2711 Supervision of Student Transportation Services – Head of Component

Elementary

Secondary

Federal

Total

100 Personnel Services – Salaries

100 Personnel Services – Salaries

826.86

Total Personnel Services – Salaries

\$826.86

200 Personnel Services – Employee Benefits

210 Group Insurance – Contracted Provider

1,748.92

220 Social Security Contributions

60.97

230 PSERS Retirement Contributions

283.53

292 Health Savings Accounts

3,000.00

Total Personnel Services – Employee Benefits

\$5,093.42

Total 2711 Supervision of Student Transportation Services – Head of Component

\$5,920.28

General Fund (10)

2720 Vehicle Operation Services

Elementary

Secondary

Federal

Total

500 Other Purchased Services

513 Contracted Carriers

1,520,864.84

516 Student Transportation Services From the IU

43,359.97

Total Other Purchased Services

\$1,564,224.81

600 Supplies

610 General Supplies

6,310.00

650 Supplies & Fees – Technology Related

60.00

Total Supplies

\$6,370.00

Total 2720 Vehicle Operation Services

\$1,570,594.81

General Fund (10)

2730 Monitoring Services

Elementary

Secondary

Federal

Total

100 Personnel Services – Salaries

100 Personnel Services – Salaries

58,884.23

Total Personnel Services – Salaries

\$58,884.23

200 Personnel Services – Employee Benefits

220 Social Security Contributions

4,504.79

230 PSERS Retirement Contributions

5,747.73

250 Unemployment Compensation

5,147.82

Total Personnel Services – Employee Benefits

\$15,400.34

Total 2730 Monitoring Services

\$74,284.57

LEA : 115218303 South Middleton SD

Printed 11/24/2020 12:41:20 PM

General Fund (10)

	<u>Elementary</u>	<u>Secondary</u>	<u>Federal</u>	<u>Total</u>
2750 Nonpublic Transportation				
500 <u>Other Purchased Services</u>				
513 Contracted Carriers				28,490.00
Total Other Purchased Services				\$28,490.00
Total 2750 Nonpublic Transportation				\$28,490.00

General Fund (10)

	<u>Elementary</u>	<u>Secondary</u>	<u>Federal</u>	<u>Total</u>
2800 Support Services – Central				
200 <u>Personnel Services – Employee Benefits</u>				
240 Tuition Reimbursement				29,119.00
Total Personnel Services – Employee Benefits				\$29,119.00
300 <u>Purchased Professional and Technical Services</u>				
340 Technical Services				2,200.00
Total Purchased Professional and Technical Services				\$2,200.00
Total 2800 Support Services – Central				\$31,319.00

General Fund (10)

2820 Information Services

Elementary

Secondary

Federal

Total

300 Purchased Professional and Technical Services

340 Technical Services

2,200.00

Total Purchased Professional and Technical Services

\$2,200.00

Total 2820 Information Services

\$2,200.00

General Fund (10)

2829 Other Information Services

Elementary

Secondary

Federal

Total

300 Purchased Professional and Technical Services

340 Technical Services

2,200.00

Total Purchased Professional and Technical Services

\$2,200.00

Total 2829 Other Information Services

\$2,200.00

General Fund (10)

2830 Staff Services

Elementary

Secondary

Federal

Total

200 Personnel Services – Employee Benefits

240 Tuition Reimbursement

29,119.00

Total Personnel Services – Employee Benefits

\$29,119.00

Total 2830 Staff Services

\$29,119.00

General Fund (10)

2834 Staff Development Services – Non-Instructional, Certified Staff Only

Elementary

Secondary

Federal

Total

200 Personnel Services – Employee Benefits

240 Tuition Reimbursement

24,475.00

Total Personnel Services – Employee Benefits

\$24,475.00

Total 2834 Staff Development Services – Non-Instructional, Certified Staff Only

\$24,475.00

General Fund (10)

2836 Staff Development Services – Non-Instructional, Non-Certified Staff Only

Elementary

Secondary

Federal

Total

200 Personnel Services – Employee Benefits

240 Tuition Reimbursement

4,644.00

Total Personnel Services – Employee Benefits

\$4,644.00

Total 2836 Staff Development Services – Non-Instructional, Non-Certified Staff Only

\$4,644.00

General Fund (10)

2900 Other Support Services

Elementary

Secondary

Federal

Total

500 Other Purchased Services

595 IU Payments By Withholding

31,823.77

Total Other Purchased Services

\$31,823.77

Total 2900 Other Support Services

\$31,823.77

General Fund (10)

2910 Support Services Not Listed Elsewhere In the 2000 Series

Elementary

Secondary

Federal

Total

500 Other Purchased Services

595 IU Payments By Withholding

31,823.77

Total Other Purchased Services

\$31,823.77

Total 2910 Support Services Not Listed Elsewhere In the 2000 Series

\$31,823.77

General Fund (10)

3000 Operation of Non-Instructional Services

Total

100 Personnel Services – Salaries

100 Personnel Services – Salaries 462,156.73

Total Personnel Services – Salaries \$462,156.73

200 Personnel Services – Employee Benefits

210 Group Insurance – Contracted Provider 15,783.81

220 Social Security Contributions 33,164.85

230 PSERS Retirement Contributions 105,504.23

250 Unemployment Compensation 2,236.15

270 Group Insurance – Self-Insurance 1,243.42

292 Health Savings Accounts 3,000.00

Total Personnel Services – Employee Benefits \$160,932.46

300 Purchased Professional and Technical Services

330 Other Professional Services 2,830.00

Total Purchased Professional and Technical Services \$2,830.00

400 Purchased Property Services

430 Repairs and Maintenance Services 16,512.71

Total Purchased Property Services \$16,512.71

500 Other Purchased Services

510 Student Transportation Services 49,427.64

580 Travel 1,071.53

599 Other Miscellaneous Purchased Services 8,199.49

Total Other Purchased Services \$58,698.66

600 Supplies

610 General Supplies 110,439.51

Total Supplies \$110,439.51

700 Property

752 Capital Equipment – Original and Additional 22,582.00

Total Property \$22,582.00

800 Other Objects

810 Dues and Fees 5,264.10

890 Miscellaneous Expenditures 1,845.68

Total Other Objects \$7,109.78

Total 3000 Operation of Non-Instructional Services \$841,261.85

General Fund (10)

3200 Student Activities

	<u>Elementary</u>	<u>Secondary</u>	<u>Federal</u>	<u>Total</u>
100 Personnel Services – Salaries				
100 Personnel Services – Salaries				462,156.73
Total Personnel Services – Salaries				\$462,156.73
200 Personnel Services – Employee Benefits				
210 Group Insurance – Contracted Provider				15,783.81
220 Social Security Contributions				33,164.85
230 PSERS Retirement Contributions				105,504.23
250 Unemployment Compensation				2,236.15
270 Group Insurance – Self-Insurance				1,243.42
292 Health Savings Accounts				3,000.00
Total Personnel Services – Employee Benefits				\$160,932.46
300 Purchased Professional and Technical Services				
330 Other Professional Services				2,830.00
Total Purchased Professional and Technical Services				\$2,830.00
400 Purchased Property Services				
430 Repairs and Maintenance Services				16,512.71
Total Purchased Property Services				\$16,512.71
500 Other Purchased Services				
510 Student Transportation Services				49,427.64
580 Travel				1,071.53
599 Other Miscellaneous Purchased Services				8,199.49
Total Other Purchased Services				\$58,698.66
600 Supplies				
610 General Supplies				108,921.25
Total Supplies				\$108,921.25
700 Property				
752 Capital Equipment – Original and Additional				22,582.00
Total Property				\$22,582.00
800 Other Objects				
810 Dues and Fees				5,264.10
890 Miscellaneous Expenditures				1,845.68
Total Other Objects				\$7,109.78
Total 3200 Student Activities				\$839,743.59

LEA : 115218303 South Middleton SD

Printed 11/24/2020 12:41:34 PM

General Fund (10)

3300 Community Services

600 Supplies

610 General Supplies

	<u>Elementary</u>	<u>Secondary</u>	<u>Federal</u>	<u>Total</u>
Total Supplies			\$1,518.26	\$1,518.26
Total 3300 Community Services			\$1,518.26	\$1,518.26

General Fund (10)

5000 Other Expenditures and Financing Uses

Total

800 Other Objects

830 Interest	989,958.59
880 Refunds of Prior Years' Receipts	52.70

Total Other Objects	\$990,011.29
----------------------------	---------------------

900 Other Uses of Funds

910 Redemption of Principal	2,335,000.00
939 Other Fund Transfers	867,389.00

Total Other Uses of Funds	\$3,202,389.00
----------------------------------	-----------------------

Total 5000 Other Expenditures and Financing Uses	\$4,192,400.29
---	-----------------------

LEA : 115218303 South Middleton SD

Printed 11/24/2020 12:41:56 PM

General Fund (10)

5100 Debt Service / Other Expenditures and Financing Uses

Elementary

Secondary

Federal

Total

800 Other Objects

830 Interest

989,958.59

880 Refunds of Prior Years' Receipts

52.70

Total Other Objects

\$990,011.29

900 Other Uses of Funds

910 Redemption of Principal

2,335,000.00

Total Other Uses of Funds

\$2,335,000.00

Total 5100 Debt Service / Other Expenditures and Financing Uses

\$3,325,011.29

General Fund (10)

	<u>Elementary</u>	<u>Secondary</u>	<u>Federal</u>	<u>Total</u>
5110 Debt Service				
800 Other Objects				
830 Interest				989,958.59
Total Other Objects				\$989,958.59
900 Other Uses of Funds				
910 Redemption of Principal				2,335,000.00
Total Other Uses of Funds				\$2,335,000.00
Total 5110 Debt Service				\$3,324,958.59

LEA : 115218303 South Middleton SD

Printed 11/24/2020 12:41:56 PM

General Fund (10)

	<u>Elementary</u>	<u>Secondary</u>	<u>Federal</u>	<u>Total</u>
5130 Refund of Prior Year Revenues / Receipts				
800 <u>Other Objects</u>				
880 Refunds of Prior Years' Receipts				52.70
Total Other Objects				\$52.70
Total 5130 Refund of Prior Year Revenues / Receipts				\$52.70

LEA : 115218303 South Middleton SD

Printed 11/24/2020 12:41:56 PM

General Fund (10)

	<u>Elementary</u>	<u>Secondary</u>	<u>Federal</u>	<u>Total</u>
5200 Interfund Transfers – Out				
900 <u>Other Uses of Funds</u>				
939 Other Fund Transfers				867,389.00
Total Other Uses of Funds				\$867,389.00
Total 5200 Interfund Transfers – Out				\$867,389.00

LEA : 115218303 South Middleton SD

Printed 11/24/2020 12:41:56 PM

General Fund (10)

5230 Capital Projects Fund Transfers

Elementary

Secondary

Federal

Total

900 Other Uses of Funds

939 Other Fund Transfers

763,389.00

Total Other Uses of Funds

\$763,389.00

Total 5230 Capital Projects Fund Transfers

\$763,389.00

LEA : 115218303 South Middleton SD

Printed 11/24/2020 12:41:56 PM

General Fund (10)

	<u>Elementary</u>	<u>Secondary</u>	<u>Federal</u>	<u>Total</u>
5250 Enterprise Fund Transfers				
900 Other Uses of Funds				
939 Other Fund Transfers				104,000.00
Total Other Uses of Funds				\$104,000.00
Total 5250 Enterprise Fund Transfers				\$104,000.00

LEA : 115218303 South Middleton SD

Printed 11/24/2020 12:41:44 PM

Capital Reserve Fund - § 1431 (32)

4000 Facilities Acquisition, Construction and Improvement Services

Total

400 Purchased Property Services

450 Construction Services

12,676.46

Total Purchased Property Services

\$12,676.46

Total 4000 Facilities Acquisition, Construction and Improvement Services

\$12,676.46

LEA : 115218303 South Middleton SD

Printed 11/24/2020 12:41:44 PM

Capital Reserve Fund - § 1431 (32)

4600 Existing Building Improvement Services

Elementary

Secondary

Federal

Total

400 Purchased Property Services

450 Construction Services

12,676.46

Total Purchased Property Services

\$12,676.46

Total 4600 Existing Building Improvement Services

\$12,676.46

Other Capital Projects Fund (39)

2000 Support Services

800 Other Objects

810 Dues and Fees

162,350.40

Total Other Objects

\$162,350.40

Total 2000 Support Services

\$162,350.40

LEA : 115218303 South Middleton SD

Printed 11/24/2020 12:41:26 PM

Other Capital Projects Fund (39)

2300 Support Services – Administration

Elementary

Secondary

Federal

Total

800 Other Objects

810 Dues and Fees

162,350.40

Total Other Objects

\$162,350.40

Total 2300 Support Services – Administration

\$162,350.40

LEA : 115218303 South Middleton SD

Printed 11/24/2020 12:41:26 PM

Other Capital Projects Fund (39)

2390 Other Administration Services

Elementary

Secondary

Federal

Total

800 Other Objects

810 Dues and Fees

162,350.40

Total Other Objects

\$162,350.40

Total 2390 Other Administration Services

\$162,350.40

Other Capital Projects Fund (39)

4000 Facilities Acquisition, Construction and Improvement Services

Total

400 Purchased Property Services

450 Construction Services

548,202.31

Total Purchased Property Services

\$548,202.31

700 Property

756 Capitalized Technology Equipment – Original

57,229.82

Total Property

\$57,229.82

Total 4000 Facilities Acquisition, Construction and Improvement Services

\$605,432.13

LEA : 115218303 South Middleton SD

Printed 11/24/2020 12:41:46 PM

Other Capital Projects Fund (39)

4600 Existing Building Improvement Services

Elementary

Secondary

Federal

Total

400 Purchased Property Services

450 Construction Services

548,202.31

Total Purchased Property Services

\$548,202.31

700 Property

756 Capitalized Technology Equipment – Original

57,229.82

Total Property

\$57,229.82

Total 4600 Existing Building Improvement Services

\$605,432.13

Other Capital Projects Fund (39)

5000 Other Expenditures and Financing Uses

Total

800 Other Objects

830 Interest 72,680.94

Total Other Objects \$72,680.94

900 Other Uses of Funds

910 Redemption of Principal 9,520,000.00

Total Other Uses of Funds \$9,520,000.00

Total 5000 Other Expenditures and Financing Uses \$9,592,680.94

Other Capital Projects Fund (39)

5100 Debt Service / Other Expenditures and Financing Uses	<u>Elementary</u>	<u>Secondary</u>	<u>Federal</u>	<u>Total</u>
800 <u>Other Objects</u>				
830 Interest				72,680.94
Total Other Objects				\$72,680.94
900 <u>Other Uses of Funds</u>				
910 Redemption of Principal				9,520,000.00
Total Other Uses of Funds				\$9,520,000.00
Total 5100 Debt Service / Other Expenditures and Financing Uses				\$9,592,680.94

LEA : 115218303 South Middleton SD

Printed 11/24/2020 12:41:58 PM

Other Capital Projects Fund (39)

5110 Debt Service

Elementary

Secondary

Federal

Total

800 Other Objects

830 Interest

72,680.94

Total Other Objects

\$72,680.94

Total 5110 Debt Service

\$72,680.94

LEA : 115218303 South Middleton SD

Printed 11/24/2020 12:41:58 PM

Other Capital Projects Fund (39)

5120 Debt Service – Refunded Bonds

Elementary

Secondary

Federal

Total

900 Other Uses of Funds

910 Redemption of Principal

9,520,000.00

Total Other Uses of Funds

\$9,520,000.00

Total 5120 Debt Service – Refunded Bonds

\$9,520,000.00

	<u>General Fund(10)</u>	<u>Student Sponsored Activity Fund(21)</u>	<u>Public Purpose Trust(27)</u>	<u>Other Compt Approved (28)</u>	<u>Athletic / Activity(29)</u>
1000 Instruction					
1100 Regular Programs - Elementary / Secondary	14,467,568.59				
1200 Special Programs - Elementary / Secondary	5,053,034.95				
1300 Vocational Education	399,640.00				
1400 Other Instructional Programs - Elementary / Secondary	48,692.71				
1500 Nonpublic School Programs	380.00				
1600 Adult Education Programs	99,151.00				
Total Instruction	\$20,068,467.25				
2000 Support Services					
2100 Support Services - Students	1,537,364.76				
2200 Support Services - Instructional Staff	2,099,000.29				
2300 Support Services - Administration	2,499,252.82				
2400 Support Services - Pupil Health	520,828.40				
2500 Support Services - Business	659,160.00				
2600 Operation and Maintenance of Plant Services	2,743,246.38				
2700 Student Transportation Services	1,679,289.66				
2800 Support Services - Central	31,319.00				
2900 Other Support Services	31,823.77				
Total Support Services	\$11,801,285.08				
3000 Operation of Non-Instructional Services					
3200 Student Activities	839,743.59				
3300 Community Services	1,518.26				
Total Operation of Non-Instructional Services	\$841,261.85				
4000 Facilities Acquisition, Construction and Improvement Services					
4600 Existing Building Improvement Services					
Total Facilities Acquisition, Construction and Improvement Services					
5000 Other Expenditures and Financing Uses					
5100 Debt Service / Other Expenditures and Financing Uses	3,325,011.29				
5200 Interfund Transfers - Out	867,389.00				
Total Other Expenditures and Financing Uses	\$4,192,400.29				
TOTAL ACTUAL EXPENDITURES & OTHER FINANCING USES	\$36,903,414.47				

	<u>Capital Reserve (690. Capital Reserve (1431)(32)</u> <u>1850)(31)</u>	<u>Other Capital Projects</u> <u>Fund(39)</u>	<u>Debt Service(40)</u>	<u>Permanent(90)</u>
1000 Instruction				
1100 Regular Programs - Elementary / Secondary				
1200 Special Programs - Elementary / Secondary				
1300 Vocational Education				
1400 Other Instructional Programs - Elementary / Secondary				
1500 Nonpublic School Programs				
1600 Adult Education Programs				
Total Instruction				
2000 Support Services				
2100 Support Services - Students				
2200 Support Services - Instructional Staff				
2300 Support Services - Administration		162,350.40		
2400 Support Services - Pupil Health				
2500 Support Services - Business				
2600 Operation and Maintenance of Plant Services				
2700 Student Transportation Services				
2800 Support Services - Central				
2900 Other Support Services				
Total Support Services		\$162,350.40		
3000 Operation of Non-Instructional Services				
3200 Student Activities				
3300 Community Services				
Total Operation of Non-Instructional Services				
4000 Facilities Acquisition, Construction and Improvement Services				
4600 Existing Building Improvement Services	12,676.46	605,432.13		
Total Facilities Acquisition, Construction and Improvement Services	\$12,676.46	\$605,432.13		
5000 Other Expenditures and Financing Uses				
5100 Debt Service / Other Expenditures and Financing Uses			9,592,680.94	
5200 Interfund Transfers - Out				
Total Other Expenditures and Financing Uses			\$9,592,680.94	
TOTAL ACTUAL EXPENDITURES & OTHER FINANCING USES	\$12,676.46	\$605,432.13	\$9,592,680.94	

Total

1000 <u>Instruction</u>	
1100 Regular Programs - Elementary / Secondary	14,467,568.59
1200 Special Programs - Elementary / Secondary	5,053,034.95
1300 Vocational Education	399,640.00
1400 Other Instructional Programs - Elementary / Secondary	48,692.71
1500 Nonpublic School Programs	380.00
1600 Adult Education Programs	99,151.00
Total Instruction	\$20,068,467.25
2000 <u>Support Services</u>	
2100 Support Services - Students	1,537,364.76
2200 Support Services - Instructional Staff	2,099,000.29
2300 Support Services - Administration	2,661,603.22
2400 Support Services - Pupil Health	520,828.40
2500 Support Services - Business	659,160.00
2600 Operation and Maintenance of Plant Services	2,743,246.38
2700 Student Transportation Services	1,679,289.66
2800 Support Services - Central	31,319.00
2900 Other Support Services	31,823.77
Total Support Services	\$11,963,635.48
3000 <u>Operation of Non-Instructional Services</u>	
3200 Student Activities	839,743.59
3300 Community Services	1,518.26
Total Operation of Non-Instructional Services	\$841,261.85
4000 <u>Facilities Acquisition, Construction and Improvement Services</u>	
4600 Existing Building Improvement Services	618,108.59
Total Facilities Acquisition, Construction and Improvement Services	\$618,108.59
5000 <u>Other Expenditures and Financing Uses</u>	
5100 Debt Service / Other Expenditures and Financing Uses	12,917,692.23
5200 Interfund Transfers - Out	867,389.00
Total Other Expenditures and Financing Uses	\$13,785,081.23
TOTAL ACTUAL EXPENDITURES & OTHER FINANCING USES	\$47,276,554.40

LEA : 115218303 South Middleton SD

Printed 11/24/2020 12:42:33 PM

PSERS Salary Data (Salary Data should relate to the General Fund only)

Amount Description	Amount
Total Salary Base for salaries subject to PSERS withholding	13,401,787.00
Total Federally Funded salaries subject to PSERS withholding	250,000.00
	<hr/>

Title I Expenditure Data

Amount Description	Amount
Expenditures Funded with Current Title I Funds	211,068.00
Expenditures Funded with Carry over Title I Funds	
	<hr/>
Total Title I Expenditure Data	\$211,068.00
	<hr/>

Benefits for Staff Relative to Collective Bargaining Agreements

	OBJECT	COVERED	NOT COVERED	TOTAL
10 General Fund				
	211 Medical Insurance	1,808,712.60	931,761.10	2,740,473.70
	212 Dental Insurance			
	215 Eye Care Insurance	16,195.08	8,342.92	24,538.00
	216 Prescription Insurance			
	271 Self-Insurance Medical Benefits			
	272 Self-Insurance Dental Benefits	93,039.54	47,929.46	140,969.00
	275 Self-Insurance Eye Care Benefits			
	276 Self-Insurance Prescription Benefits			
	FUND TOTAL	\$1,917,947.22	\$988,033.48	\$2,905,980.70
50 Enterprise Fund	No Self Insurance data to report			
	211 Medical Insurance			
	212 Dental Insurance			
	215 Eye Care Insurance			
	216 Prescription Insurance			
	271 Self-Insurance Medical Benefits			
	272 Self-Insurance Dental Benefits			
	275 Self-Insurance Eye Care Benefits			
	276 Self-Insurance Prescription Benefits			
	FUND TOTAL			
60 Internal Service Fund	No Self Insurance data to report			
	211 Medical Insurance			
	212 Dental Insurance			
	215 Eye Care Insurance			
	216 Prescription Insurance			
	271 Self-Insurance Medical Benefits			
	272 Self-Insurance Dental Benefits			
	275 Self-Insurance Eye Care Benefits			
	276 Self-Insurance Prescription Benefits			
	FUND TOTAL			
Total of All Funds		\$1,917,947.22	\$988,033.48	\$2,905,980.70

LEA : 115218303 South Middleton SD

Printed 11/24/2020 12:42:43 PM

Function	Special Education (Prior Year)	Nonspecial Education (Prior Year)	Total (Prior Year)	Special Education (Current Year)	Nonspecial Education (Current Year)	Total (Current Year)
2120 Guidance Services	121,357.00	687,683.00	809,040.00	140,026.00	793,482.00	933,508.00
2140 Psychological Services	150,223.89	100,146.00	250,369.89	140,501.80	129,513.00	270,014.80
2150 Speech Pathology and Audiology Services						
2160 Social Work Services	659.25	3,735.75	4,395.00	659.00	3,736.00	4,395.00
2260 Instruction and Curriculum Development Services	97,160.00	550,582.00	647,742.00	71,256.54	403,788.00	475,044.54
2350 Legal and Accounting Services	15,072.00	45,217.00	60,289.00	14,456.00	81,918.00	96,374.00
2420 Medical Services	17,201.00	97,467.00	114,668.00	19,410.00	109,991.00	129,401.00
2440 Nursing Services	93,869.00	375,479.00	469,348.00	58,672.00	332,475.00	391,147.00
2700 Student Transportation Services	259,047.00	1,467,929.00	1,726,976.00	251,893.00	1,427,396.00	1,679,289.00
Total	\$754,589.14	\$3,328,238.75	\$4,082,827.89	\$696,874.34	\$3,282,299.00	\$3,979,173.34

(PRINCIPAL AMOUNTS ONLY)

GOVERNMENTAL FUNDS/ ACTIVITIES

	Short-Term Borrowing	General Obligation Bonds/Notes	Authority Building Obligations	Other Long-Term Debt	Other Post-Employment Benefits (OPEB)	Compensated Absences	Net Pension Liability	Total
1. Debt at Beginning of Fiscal Year		36,000,000.00		645,836.00	4,973,713.00	686,940.00	47,621,000.00	89,927,489.00
2. Additional Debt Incurred During Year		9,705,000.00				16,428.00		9,721,428.00
3. Retirements and Repayments		11,855,000.00		149,277.00	888,163.00		2,148,000.00	15,040,440.00
4. Debt at End of Fiscal Year		33,850,000.00		496,559.00	4,085,550.00	703,368.00	45,473,000.00	84,608,477.00
5. Accreted Interest at End Of Fiscal Year								
6. Total Debt and Accreted Interest		33,850,000.00		496,559.00	4,085,550.00	703,368.00	45,473,000.00	84,608,477.00
7. Current Portion P&I - Due within 1 year		3,210,617.11		150,000.00		50,000.00		3,410,617.11
8. Interest Paid during current fiscal year		989,959.61						989,959.61

(PRINCIPAL AMOUNTS ONLY)

PROPRIETARY FUNDS

- 1. Debt at Beginning of Fiscal Year
- 2. Additional Debt Incurred During Year
- 3. Retirements and Repayments
- 4. Debt at End of Fiscal Year
- 5. Accreted Interest at End Of Fiscal Year
- 6. Total Debt and Accreted Interest
- 7. Current Portion P&I - Due within 1 year
- 8. Interest Paid during current fiscal year

Total Principal and Interest Payments Made by Your School - All Funds

Function	Fund		Principal (910)	Principal (920)	Interest (830)	Total (Principal +Interest)	Misc Other Uses (990)
5110	10	General Fund	2,335,000.00		989,958.59	3,324,958.59	
5110	20	Special Revenue Funds					
5110	30	Capital Projects Funds			72,680.94	72,680.94	
5110	40	Debt Service Fund					
5110	90	Permanent Fund					
5120	10	General Fund					
5120	20	Special Revenue Funds					
5120	30	Capital Projects Funds	9,520,000.00			9,520,000.00	
5120	40	Debt Service Fund					

Total Debt Payments - Governmental Funds			\$11,855,000.00		\$1,062,639.53	\$12,917,639.53	
---	--	--	------------------------	--	-----------------------	------------------------	--

Function	Fund		Principal (910)	Principal (920)	Interest (830)	Total (Principal +Interest)
5110	50	Enterprise Fund				
5110	60	Internal Service Fund				
5120	50	Enterprise Fund				
5120	60	Internal Service Fund				

Total Debt Payments - Proprietary Funds							
--	--	--	--	--	--	--	--

Debt Details
Governmental Funds/ Activities

Debt Category	Debt Issue Date (MM/YYYY)	Principal Amounts Only				Current Portion Due Within One Year (Principal and Interest)	Interest Paid During Fiscal Year
		Debt at Beginning of Fiscal Year	Additions	Reductions / Repayments	Debt at End of Fiscal Year		
General Obligation Bonds/Notes – CIB	06/2020		9,705,000.00		9,705,000.00	15,774.60	1.00
General Obligation Bonds/Notes – CIB	06/2019	9,745,000.00			9,745,000.00	301,823.76	197,411.72
General Obligation Bonds/Notes – CIB	05/2016	8,940,000.00		5,000.00	8,935,000.00	325,606.25	320,665.63
General Obligation Bonds/Notes – CIB	05/2016	6,700,000.00		2,325,000.00	4,375,000.00	2,544,012.50	218,912.50
General Obligation Bonds/Notes – CIB	03/2015	9,975,000.00		9,525,000.00	450,000.00	9,000.00	238,568.76
General Obligation Bonds/Notes – CIB	03/2014	640,000.00			640,000.00	14,400.00	14,400.00
Other Long Term Debt/Liabilities		645,836.00		149,277.00	496,559.00	150,000.00	
Compensated Absences		686,940.00	16,428.00		703,368.00	50,000.00	
Other Post-Employment Benefits (OPEB)		4,973,713.00		888,163.00	4,085,550.00		
Net Pension Liability		47,621,000.00		2,148,000.00	45,473,000.00		
Totals for Debt Entered:		\$89,927,489.00	\$9,721,428.00	\$15,040,440.00	\$84,608,477.00	\$3,410,617.11	\$989,959.61

General Fund (10)

Section 1: Tuition/Purchased Services as Reported within Expenditure Detail

	Amount
Tuition Reported in General Fund Expenditures 1000-560	2,521,064.47
Purchased Services in General Fund Expenditures 1000-594 and 1000-597	

Section 1 Total	\$2,521,064.47
------------------------	-----------------------

Section 2: Tuition Paid to Institution Types During Fiscal Year

	Tuition Paid For Nonspecial Education	Tuition Paid For Special Education	Total
1 1306 Institutions			
2 Institutionalized Children's Programs			
3 Juveniles Incarcerated in Adult Facilities			
4 Residential Treatment Facilities			
5 Other Local Education Agencies	379,653.14	504,002.47	883,655.61
6 Brick and Mortar Charter Schools			
7 Cyber Charter Schools	433,562.92	313,836.94	747,399.86
8 Career and Technology Centers	399,640.00		399,640.00
9 Approved Private Schools		43,189.00	43,189.00
10 PA Chartered Schools for the Deaf and Blind			
11 Private Residential Rehabilitative Institutions			
12 Juvenile Detention Centers			
13 Special Program Jointures			
14 Other Tuition Not Included Elsewhere In This Section	138,538.00	308,642.00	447,180.00
Section 2 Total	\$1,351,394.06	\$1,169,670.41	\$2,521,064.47

LEA : 115218303 South Middleton SD

Printed 11/24/2020 12:43:06 PM

Food Service / Cafeteria Operations Fund (51)

3000 Operation of Non-Instructional Services

Total

500 Other Purchased Services

570 Food Service Management

816,572.56

Total Other Purchased Services

\$816,572.56

600 Supplies

610 General Supplies

52,421.18

Total Supplies

\$52,421.18

700 Property

740 Depreciation

2,555.31

Total Property

\$2,555.31

Total 3000 Operation of Non-Instructional Services

\$871,549.05

LEA : 115218303 South Middleton SD

Printed 11/24/2020 12:43:06 PM

Food Service / Cafeteria Operations Fund (51)

	<u>Elementary</u>	<u>Secondary</u>	<u>Federal</u>	<u>Total</u>
3100 Food Services				
500 <u>Other Purchased Services</u>				
570 Food Service Management				816,572.56
Total Other Purchased Services				\$816,572.56
600 <u>Supplies</u>				
610 General Supplies				52,421.18
Total Supplies				\$52,421.18
700 <u>Property</u>				
740 Depreciation				2,555.31
Total Property				\$2,555.31
Total 3100 Food Services				\$871,549.05

	<u>Food Service(51)</u>	<u>Child Care Operations(52)</u>	<u>Other Enterprise(58)</u>	<u>Internal Service(60)</u>	<u>Total</u>
3000 <u>Operation of Non-Instructional Services</u>					
3100 Food Services	871,549.05				871,549.05
Total Operation of Non-Instructional Services	\$871,549.05				\$871,549.05
TOTAL ACTUAL EXPENDITURES & OTHER FINANCING USES	\$871,549.05				\$871,549.05

LEA : 115218303 South Middleton SD

Printed 11/24/2020 12:43:39 PM

Fund	School	School Number	Local Personnel	Local Nonpersonnel	State Personnel	State Nonpersonnel	Federal Personnel	Federal Nonpersonnel	Total	Explanation
10										
	Boiling Springs HS	6328	8,294,286.25	3,534,418.92				6,483.00	11,835,188.17	
	Iron Forge El Sch	8402	3,890,143.54	1,708,024.50			313,037.25	1,258.40	5,912,463.69	
	W.G. Rice El Sch	1730	4,640,304.59	2,233,080.77			175,944.66	29,652.79	7,078,982.81	
	Yellow Breeches MS	7611	6,008,866.89	1,799,765.86			85,842.92		7,894,475.67	
Total			22,833,601.27	9,275,290.05			574,824.83	37,394.19	32,721,110.34	